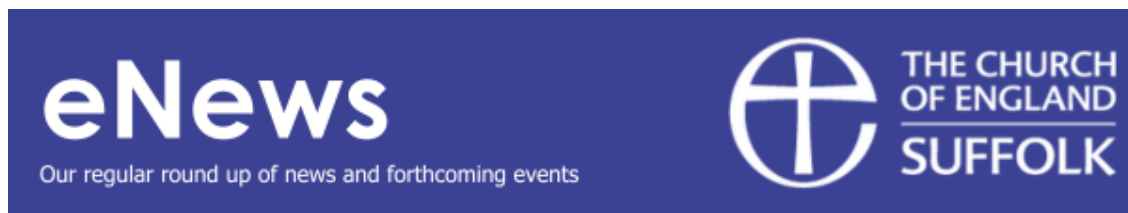


**Thursday 16 January 2025**



### **Church community embark on roof repair project for 700-year-old church**



The south aisle roof at St Margaret's Church in Stradishall is in dire need of repair, with buckets put out to catch the drips of water leaking into the building. Churchwarden Peter Thompson temporarily sealed the roof and applied for money from the national £9 million Minor Repairs and Improvements Grants fund – securing £3,600 for investigation work to assess the damage.

Peter said: *"People in the village, many who were not really churchgoers, have got involved and have offered to help. What is great is we have done a lot of things inside the church as well, helped by the village community. We have now painted the inside of the building, it's a lovely church to come and visit. Although my background is in the chemical industry I have always had an interest in building and restoration, so I thought I'd help by using my experience to put things right."*

Peter said there were plans afoot to apply for additional grants and fundraise for the estimated £120,000 cost of repairing the roof. Despite the damage to the roof, the church continues to host services and events as part of the Bansfield Benefice.



Toby Hart, the Diocese's Church Buildings Support Officer, said: *"We were happy to support the church community with a grant to pay for investigation work to discover how the roof can be repaired. It is so important our churches are protected as places for worship as well as vital community buildings. We would encourage churches in Suffolk who are looking for funding through the Minor Repairs and Improvements Grant fund to get in contact."*

For more information visit our Minor Repairs and Improvements Grants fund website page [here](#). To read the full story please click [here](#).

### **Warm Welcome Week**

This January the Warm Welcome Campaign is launching Warm Welcome Week, running from 20 to 26 January 2025. In Warm Welcome Week they are asking everyone to wear warm colours and get creative with pinks, oranges, reds, and purples to chase the blues away this January. Warm Welcome Week will shine a colourful light on the joy, positivity, friendship and connection found in every Warm Welcome Space, fuelled by human warmth. The Warm Welcome Campaign champions, resources and connects a growing



network of partners and more than 4,500 Warm Welcome Spaces across the country. Warm Welcome Spaces are inclusive spaces where people of all cultures, backgrounds, needs and faiths can come together as one community. You can find your nearest Warm Welcome Space via an interactive Warm Welcome Spaces map [here](#). You can also create an account and register your warm space on their map [here](#).

### **Safeguarding Training has a New Home!**

**Do you need to update your Safeguarding Training?** All church volunteers and employees are required to update their Safeguarding Training every three years. If yours is due for renewal, please check [Insight](#) where you will find our training courses for 2025. Some can be completed online, at your own choice of time and pace whereas others are available in-person with a diocesan safeguarding trainer leading a group event. We will continue to add events throughout the year, but most are already published and waiting for you to book your place! There are over 80 courses already published with more on the way, so do please check the options fully to find the course that is right for you.

**Not sure what level of training is right for you?** Check our [tick list of courses](#) to find your role and the required training.

**Not sure when your training is due for renewal?** Speak to your local safeguarding officer. When you last completed training, you should have shared your certificate with your parish/benefice safeguarding officer, and this will have included your training course completion dates. **Remember** – those people needing to complete the Safeguarding Leadership course will need to allow 13 weeks as the course includes pre-work, two group discussion sessions and a 6-week reflection period before post-work can be completed and the course certificate issued.

**Are you a Safeguarding Officer for your Parish/Benefice/Local Church Community?** We are running various Safeguarding Officer Induction and Networking Events throughout the year. Please look out for more information on these, and check [Insight](#) for session details.

**Where can you get further support?** Your Diocesan Safeguarding Trainers, Lisa Hicks and Rick Peat will be available at the above events, or are contactable at [safeguarding.training@cofesuffolk.org](mailto:safeguarding.training@cofesuffolk.org)



Opportunity to bring young people together and explore faith.

### **St Mary-le-Tower events and Minster Ceremony Service**

St Mary-le-Tower Church, Ipswich IP1 3BE

#### **Church open day | Saturday 18 January, all day**

The soon-to-be minster welcomes all people to explore and enjoy the beautiful church. The café will be open all day with children's activities, sculpture and stained glass exhibits. Join a free church tour at 12.00pm.

#### **Children's singing workshop | Saturday 18 January, 10.30am to 11.30am**

Join this free music event for an hour of singing and music-making in the church. Enjoy songs, play junk percussion, play music games. Parents are also welcome to enjoy refreshments from the café.

#### **Bell ringing workshop | Saturday 18 January, 10.15am to 1.30pm**

Come along and explore the bell tower and ringing chamber, and while you are there chat to experienced bellringers and try ringing the region's most famous bells.

#### **Ecumenical Vespers**

Saturday 18 January, 4.00pm

Join us for Ecumenical Vespers on the eve of the re-designation of St Mary le Tower as Ipswich Minster and on the first day of the week of prayer for Christian Unity. All welcome.

#### **Minster-Making Ceremony**

Sunday 19 January 10.30am

Join us for the historic official redesignation service of St Mary le Tower to Minster, led by Bishop Martin. Open to all.

## Events

### **A Special Service of Evensong**

Sunday 19 January 5.30pm

St Mary's Church, Woodbridge IP12 4LP

To celebrate Thomas Seckford on the anniversary of his burial. Music of the period performed by St Mary's Church Choir and the Ravenscroft Consort, followed by mulled wine. For information available [here](#).

### **Sepsis Awareness Talk**

Saturday 25 January, 2.00pm for 2.30pm start

King Edward VII Memorial Hall, High Street, Newmarket CB8 8JP

An opportunity to learn more in collaboration with All Saints' Church, Anglian CPR and Newmarket Town Council. Join this free event, open to all, to find out who can be affected, signs and symptoms, accessing support, recovery and more.

### **Awakenings | Suffolk Chamber Choir with special guests Suffolk Soul Singers**

Saturday 1 February, doors open at 7.00pm for a prompt 7.30pm start.

St Margaret's Church, Ipswich IP4 2BE

This inaugural concert of the newly formed semi-professional Suffolk Chamber Choir, led by Dominic Ellis-Peckham with special guests, Suffolk Soul Singers directed by Andi Hopgood. You can expect a packed programme of sacred and secular music from a range of composers. Refreshments and interval drinks will be available. Tickets are [available here](#) or on the door.

### **Give to Go Green: Match Funding, Fundraising success stories and how your church can get involved!**

The logo for 'Give to Go Green' is displayed on a green rectangular background. The text 'GIVE TO GO GREEN' is written in a bold, white, sans-serif font, with 'GIVE TO' on the top line and 'GO GREEN' on the bottom line.

Great news! Give to Go Green launches second round. In this drop-in session James Rolls and Emma Denton will be talking about Give to Go Green, a match funding, £1 for £1 initiative set up to help churches carry out net zero carbon projects in their buildings. We'll be talking to churches that have already taken part, in the first round giving you a chance to hear about their amazing fundraising successes and the great things they will be

doing with these funds. We'll be running through what funds are on offer, the projects that are eligible for support, how to apply and what support will be available to your church throughout the scheme. There will also be plenty of time for you to ask any questions that you may have. There is up to £10,000 of match funding on offer to each church that applies, so be sure to join us and find out more about this fantastic opportunity. For more information please email: [james.rolls@cofesuffolk.org](mailto:james.rolls@cofesuffolk.org).

Tuesday 4 February, 1.00pm | [Book here](#)

Wednesday 5 February, 7.00pm | [Book here](#)

Thursday 13 February, 1.00pm | [Book here](#)

### **Lower than the Angels**

St John's Church, Bury St Edmunds IP33 1SN

Thursday 6 February at 7.30pm

Join Professor Diarmaid MacCulloch as he speaks about his recent book. Admission £12 + 10% booking fee. Advance tickets from [We Got Tickets](#).

### **Discover the music and worship resources of Iona - workshop and service**

Saturday 15 February | Workshop 2.00pm | Service 4.30pm

St Edmundsbury Cathedral, Bury St Edmunds IP31 1LS



A workshop exploring the rich and varied worship resources of the Iona Community. We'll be discovering (and singing) a range of songs produced by the Wild Goose Resource Group, and looking at poems, prayers and reflections that can be used creatively in acts of worship. The workshop will be especially useful for those

involved in planning and leading worship, but is also suitable for anyone who enjoys singing. Workshop leader: Richard Hubbard, St Edmundsbury & Ipswich Music Development Director, with local members of the Iona Community. The workshop will be followed at 4.30pm by a service incorporating Iona resources. Tickets cost £6 and are available [here](#). Admission to the service is free. For more information, email [music.development@stedscathedral.org](mailto:music.development@stedscathedral.org).

### **Digital Surgery with the Diocesan Parish Resources Team**

Wednesday, 19 February, 10.00am

Join the Parish Resources Team at the first of a series of surgeries to find out more about enhancing the digital giving presence in your parish. Find out about and get help with purchasing or borrowing a contactless device, setting up online giving (including QR codes), get your contactless device repaired or updated with new campaigns, find out how to have an effective online giving presence on your ACNY or website pages. Book half hour 1:1 slots to address your digital giving needs. For more information email [Emma Denton](#) or [Emma Rowlinson](#), Diocesan Giving Advisors. Please note there is no parking available. Please [book here](#).

### **Faith Story with Katie de Bourcier**

Monday 24 February, 7.00pm. By Zoom



Katie de Bourcier joined as Diocesan Mission Enabler in 2024. Prior to that she was Team Rector for a rural market town and several villages in north Essex, having served her curacy in a busy parish in Chelmsford. Before ordination Katie worked for the Ministry of Defence for a number of years as a civil servant, gaining valuable experience of leadership, change management, and organisational development. But she always suspected that God had something else up his sleeve! In this hour-

long conversation, Katie will share her faith journey with us, and there will be lots of time

for questions and conversation. Listening to someone else's journey with God is not only interesting but encouraging and helpful for our own spiritual growth and development.

[Sign up here.](#)

### **Diocesan Growing Younger Conference**

Saturday 8 March 10.00am - 3.30pm

St Michael's Church, Framlingham IP13 9BH



Growing Younger is at the heart of our mission. We seek to support and enable those working with children, young people, families and young adults, and to come alongside young people to help them grow in their faith and become confident disciples of Christ. Archdeacon Rich and the Growing Younger team are hosting a

Growing Younger Conference, and we are delighted that Lucy Moore, who leads the CofE Growing Faith Foundation, will be the keynote speaker. The day will also include worship, workshops and networking. Come along as individuals or bring a team, booking is via

[Insight here.](#)

### **A workshop for all who enjoy singing music for worship**

Saturday 8 March 2025, 10.00am – 4.00pm

St Mary's Church, Halesworth IP19 8LL

From Tallis to Townend – an enthralling musical journey through Christian worship music. Explore a wealth of eclectic styles, from the music of the early church to the vibrant sounds of today's worship. Something for everyone, whether you are an experienced choral singer, or simply enjoy singing in church. The workshop will also be ideal for anyone involved in planning worship, demonstrating a range of creative possibilities for churches of all sizes. Workshop leader: Richard Hubbard, St Edmundsbury & Ipswich Music Development Director. Cost: Tickets for the workshop cost £10, and are available by clicking the button. Admission to the service is free. For more information, contact [music.development@stedscathedral.org](mailto:music.development@stedscathedral.org) click here to [book](#).

### **Lark Rise Retreats - Poetry and Prayer**

Saturday 22 March, 10.00am - 4.00pm

St John the Baptist, Felixstowe IP11 7PW

Poet and Priest Malcolm Guite will explore the links between poetry and prayer, particularly the ways in which poetry can enrich and deepen our spiritual life. He will focus particularly on George Herbert's poem *Prayer* and how each of the powerful images in that poem can unlock for us different aspects of prayer. There will be refreshments but please bring your own lunch. Everyone welcome. More details and bookings on [www.larkriseretreats.org](http://www.larkriseretreats.org) or call 01394 284213.

### **Autism (ASD) Training Day**

Friday 28 March 9.00am - 4.15pm

St Andrew's Church Hall, Rushmere St Andrew IP5 1DH

This workshop offers practical and creative approaches to meet the unique needs of individuals with ASD, including difficulties in communication, sensory processing and social

interaction. The workshop will cover the basics of ASD, and explore how some creative activities can provide safe, structured ways for individuals to express feelings and experiences that may be hard to communicate verbally. The standard cost is £90.00 per person, but a discounted rate of £70.00 is available for students, and for those working for the NHS, charities and churches/Diocese. For more information and for details on how to apply please [click here](#).

### **The Big Weekend**

Friday 11 April, 11.00am - Sunday 13 April, 4.00pm  
Sizewell Hall, Leiston IP16 4TX

The Big Weekend is organised by the Church of England here in St Edmundsbury and Ipswich, and run by experienced youth workers from around Suffolk. It's a weekend of craziness, worship, games and friendship all focused around learning more about living as a Christian in the C21st. The event is for young people from school years 7-13. Whilst it is Christian in ethos and focus you don't have to call yourself a Christian to be able to attend and have fun! Cost of the weekend is £60 per person. [Book here](#).

### **Lark Rise Retreats - Finding Inner Peace - Practising Meditation & Mindfulness**

Saturday 26 April, 10.00am - 4.00pm  
St Edmund's Church, Felixstowe IP11 2HL

Led by the Revd Catherine Bond who will be teaching the practice of meditation and offering people the opportunity to be in meditation together. When we create space within ourselves by letting go of concerns or worries, we create space for God's peace and healing. Everyone welcome. More details and bookings on [www.larkriseretreats.org](http://www.larkriseretreats.org) or call on 01394 284213.

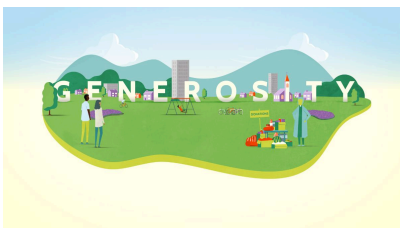
### **In the beginning was the story... Approaching the New Testament**

Earl Stonham Village Hall, Stowmarket IP14 5HJ  
Wednesdays 30 April, 7 May, 14 May, 28 May, 4 June, 11 June and 18 June, 7.30pm - 9.30pm

This course looks at the beginnings of what became Christianity, in the writings of the New Testament, and explores their narrative features. Led by the Revd Canon John Parr, Approaching the New Testament takes a story-shaped approach to the heart of Christian faith. To book your place please [click here](#).

### **Building a Generous Church conference**

Saturday 17 May, 9.30am  
Bridge Community Church, 68 Queen's Road, Bury St Edmunds IP33 3EW



We invite you to join Archdeacons David and Rich; Gary Peverley, Diocesan Secretary; Diocesan staff and others to be inspired by three keynote speakers focusing on compassionate communities and the impact on our society, and how to put generosity at the heart of our lives. There will be a choice of 12 workshops to attend to help your church become more informed and better resourced to grow a generous culture and reach financial sustainability. Bishop Graeme will

open the conference. All those who are part of the Church of England Suffolk community are welcome. For more information and to book please click [here](#).

### **'Leading your Church into Growth': LyCiG is back for 2025!**

Friday 13 June, 5.00pm to 9.00pm and Saturday 14 June, 9.00am to 6.00pm  
Debenham Sports & Leisure Centre IP14 6BL



We invite you to come with a team from your benefice, parish or worshipping community – that could be a team of three or a team of 12, the PCC or a few people keen on mission, or whatever combination works for you. This Suffolk-based LyCiG conference will be led by guest speakers from the National LyCiG Organisation. It will take the form of an open seminar with interactive talks, practical exercises, workshops and time for personal

reflection. The aims of the course are to:

- Inspire you as leaders to help lead your church(es) into growth
- Encourage you to feel that in your own way, at your own pace, and with God's help you can do it
- Equip you with a straightforward and workable strategy
- Give you teaching resources so you can share LyCiG with others in your church
- Enable you to create (or update) and implement a Growing in God Plan for Growth.

This is a free event! Spaces are limited so please ask your Incumbent or Churchwarden to book early. Please [visit here to book](#).

### **LoveRural - National Rural Mission Conference 2025**

Monday 22 September, 11.30am and Tuesday 23 September, 3.00pm  
St Edmundsbury Cathedral, Bury St Edmunds IP33 1LS



Join the Diocese of St Edmundsbury and Ipswich for this 24-hour national gathering to thank God for the ways in which he is making new disciples in rural contexts and reflect on key learning. This event will bring together senior leaders, pioneers, rural resource church leaders and other partners. We will share learnings from rural Strategic Development Funded (SDF) projects, including Suffolk's "Growing in God in the Countryside" and the

national "Rural Resourcing Church Learning Community". There will be opportunities to connect and pray with others and explore developments in rural mission. [To book please click here](#).

## **Notices**

**New Electoral Roll:** The Electoral Roll is a list of names and addresses of every person who can vote in the annual parochial church meeting. It is revised annually but replaced in its entirety every six years. The current electoral-rolls (created in 2019) will be replaced with brand-new rolls this year (2025). Everything you need to help you with this is on our website: [APCMs and electoral roll - Diocese of St Edmundsbury and Ipswich](#)



In accordance with the [Church Representation Rules \(see here\)](#), following your APCM and no later than 1 July in each year, parishes should give the Diocesan Secretary written notification of the number of names there are on the roll of the parish as at the date of the annual parochial church meeting. To facilitate this requirement, please return your completed Electoral Roll Certificates by email to [diocesan.secretary@cofesuffolk.org](mailto:diocesan.secretary@cofesuffolk.org). We ask that wherever possible forms are returned electronically, however if you have no means to do this, they can be returned by post at the address: Diocesan Electoral Roll Officer, The Diocesan Office, 4 Cutler Street, Ipswich, IP1 1UQ.

### **Statistics for Mission**

Thank you to all parishes who have completed their Statistics for Mission forms. The National Church deadline is 31 January 2025. Returns should be submitted via the Online Parish Returns System, which can be accessed here. [Parish Returns Online](#) If you require log-in details or any other assistance with the online portal, please contact [statistics@cofesuffolk.org](mailto:statistics@cofesuffolk.org). Further information regarding Parish returns, including videos on how to submit, can be found here: [Parish returns - Diocese of St Edmundsbury and Ipswich](#).

**Dwelling in the Word:** The new text for Dwelling in the Word is available [here](#). For further information please visit: [Dwelling in the Word roundtable - Church Mission Society \(CMS\)](#).

**Kneelers:** 100 kneelers are available to recycle please email [Stella Jones](#) if you would like further information.

### **Vacancies**

Project Coordinator | St Mary's Church East Bergholt, please email [stmaryschurcheb@gmail.com](mailto:stmaryschurcheb@gmail.com) | Closing date: 24 January

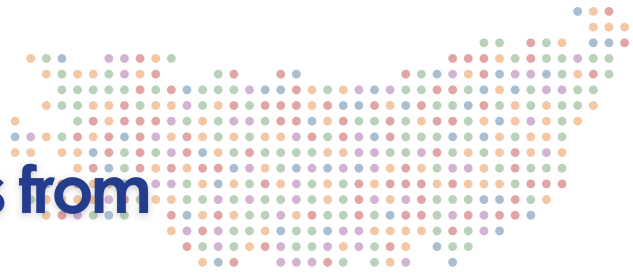
[Rector](#) | North Bosmere Benefice | Closing date: 28 January

[Archdeacon of Ipswich](#) | Closing date: 29 January

[Historic Church Building Support Officer \(HCBSO\)](#) | Closing date: 2 February

[Team Rector](#) | Wilford Peninsula Team Ministry | Closing date: 12 February

**Click here to print and share with others**



# Watch our stories from around Suffolk



---

*Copyright © 2025 Diocese of St Edmundsbury and Ipswich, All rights reserved.*

This email is generated from the Communications Office at the Diocese of St Edmundsbury and Ipswich

**Our mailing address is:**

Diocese of St Edmundsbury and Ipswich, 4 Cutler Street, Ipswich, Suffolk, England IP1 1UQ

[Add us to your address book](#)

[unsubscribe from this list](#) [update subscription preferences](#)

---

---

This email was sent to [lauren.bridgewater@cofesuffolk.org](mailto:lauren.bridgewater@cofesuffolk.org)

[why did I get this?](#) [unsubscribe from this list](#) [update subscription preferences](#)

Diocese of St Edmundsbury and Ipswich · St Nicholas Centre, 4 Cutler Street · Ipswich · Suffolk, England IP1 1UQ · United Kingdom