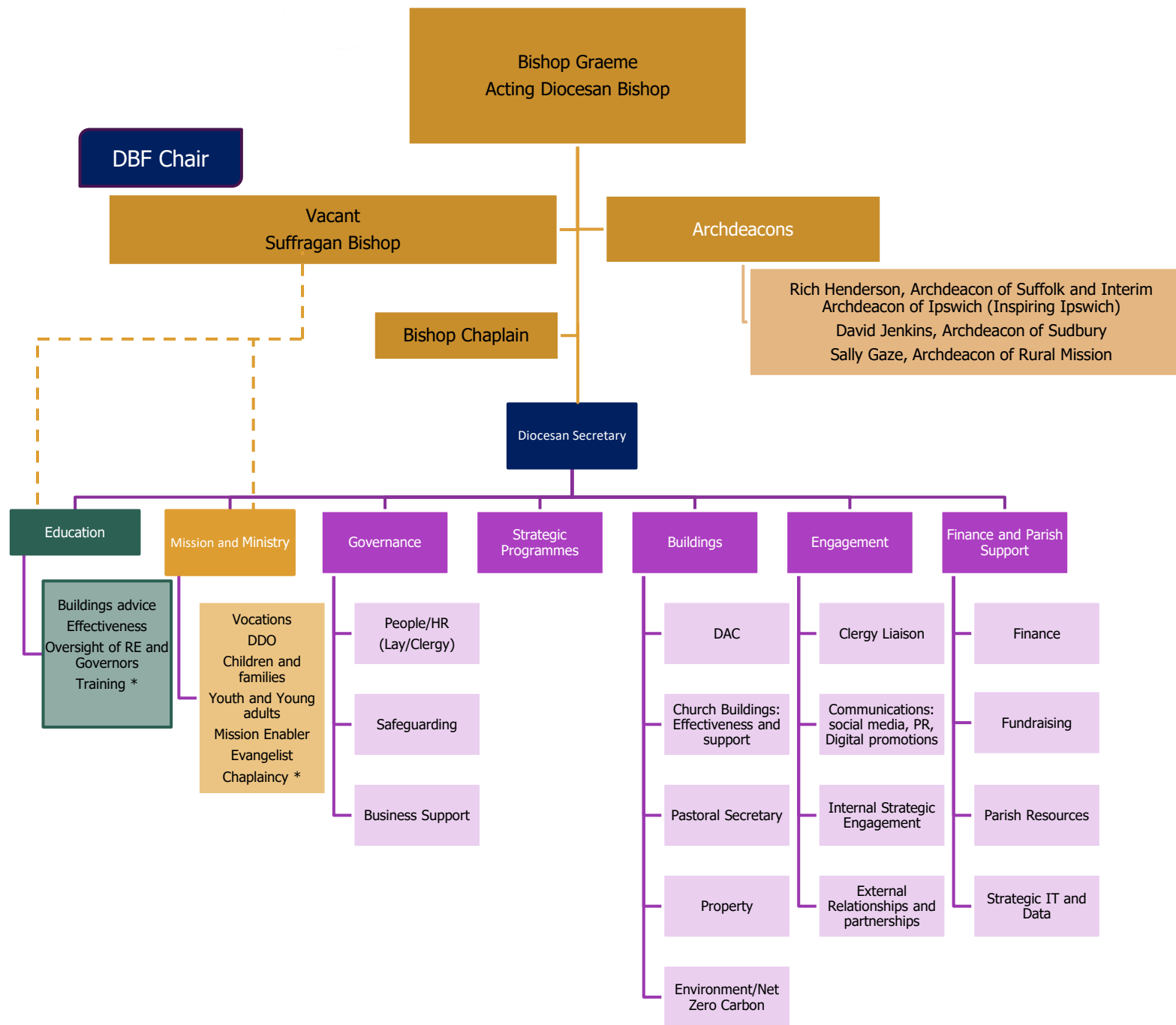


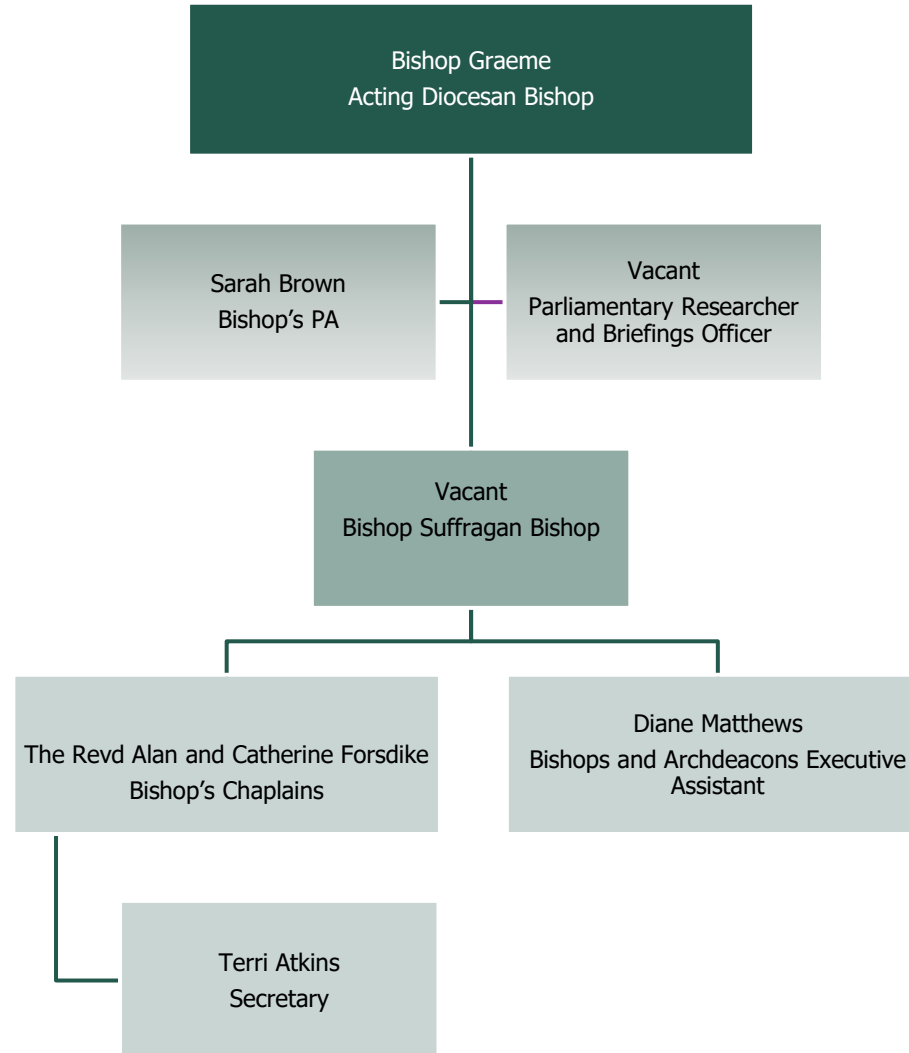
Growing in God / Cultural Change



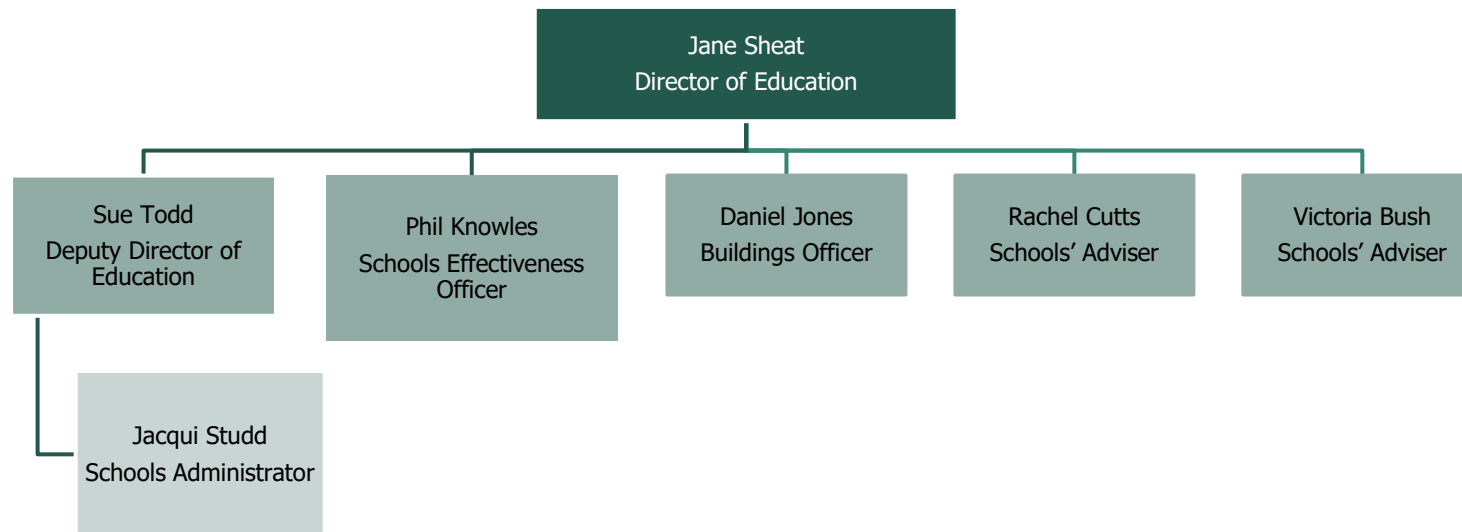
Not an exhaustive list of all
areas of activity.

Updated: 10 September 2025

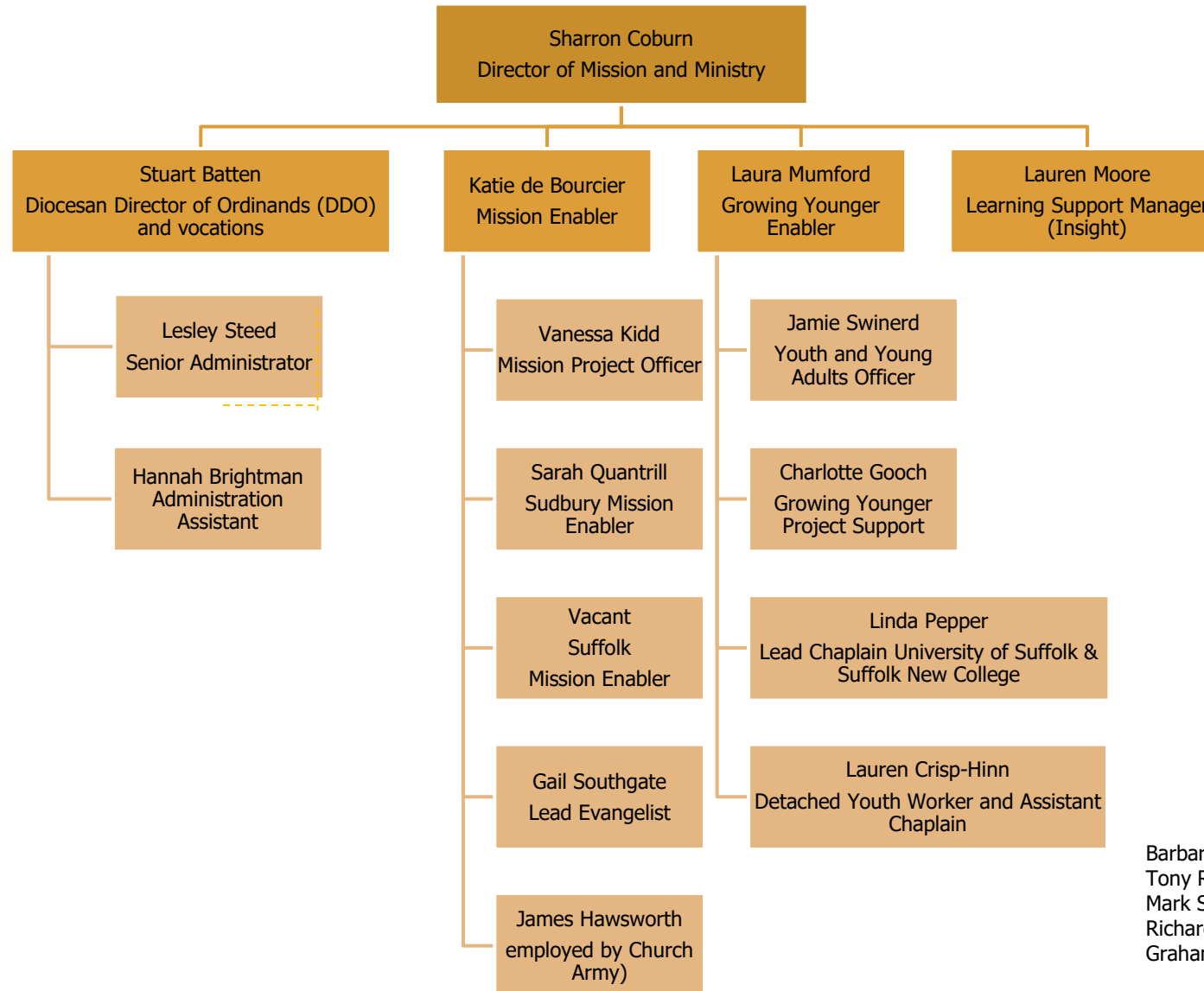
Bishops' Office Team



Diocesan Board of Education

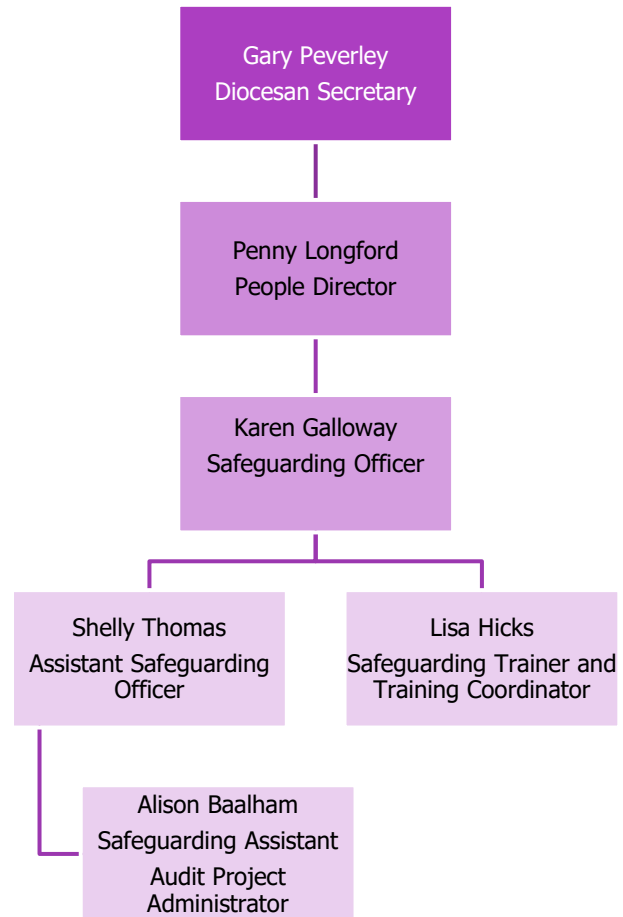


Mission and Ministry

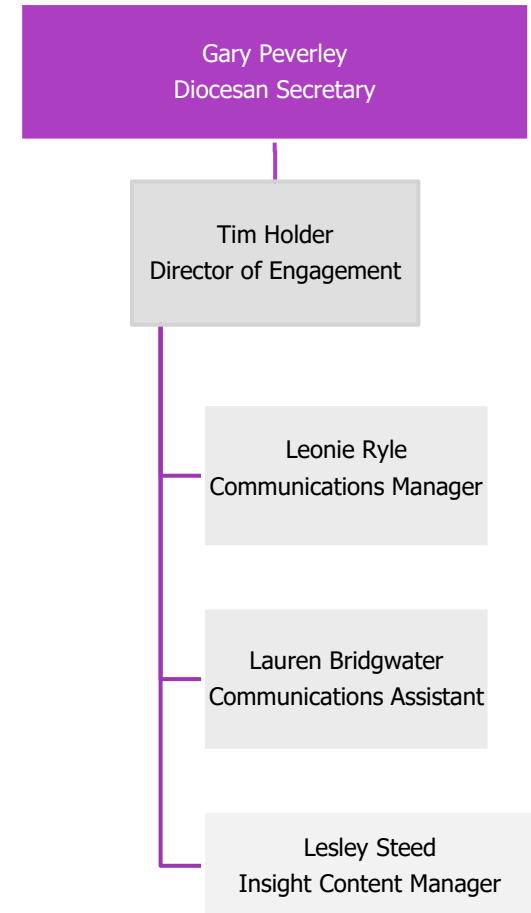


Barbara Hill, Deputy Warden for Readers
Tony Redman, Bishop's Advisor for Self-Supporting Ministry
Mark Sheard, World Mission Officer
Richard Hubbard – Music
Graham Miles, Rural Chaplain

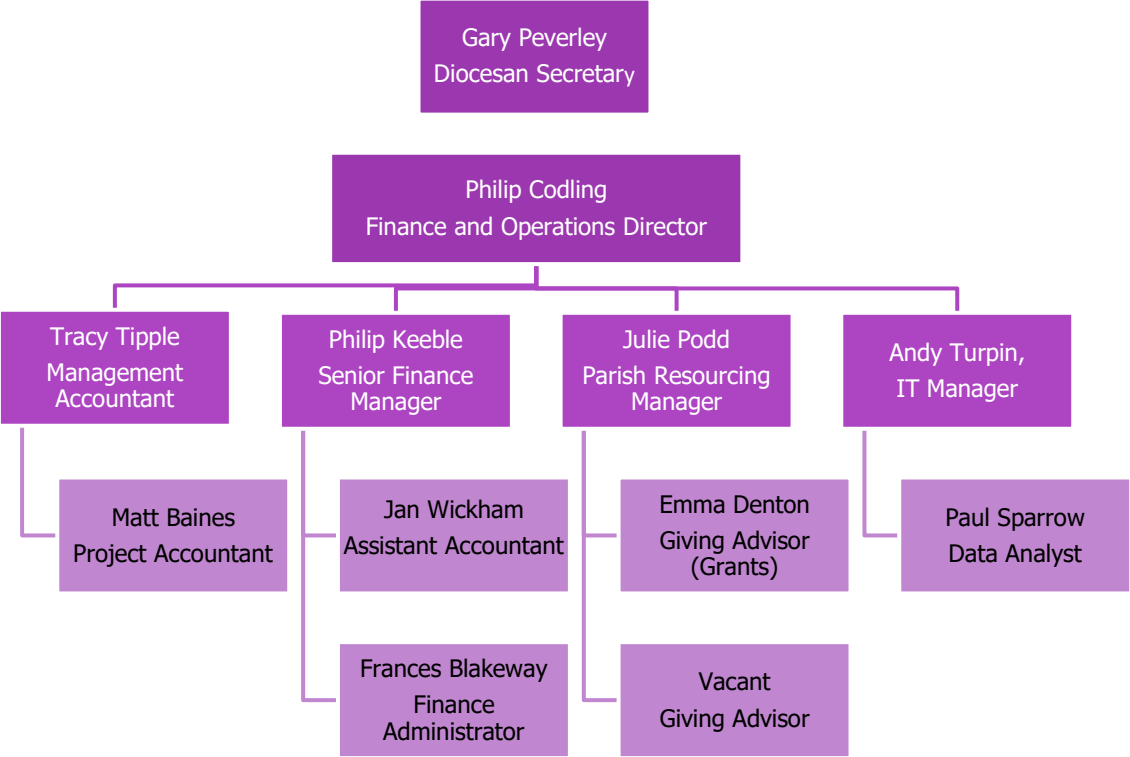
Safeguarding team



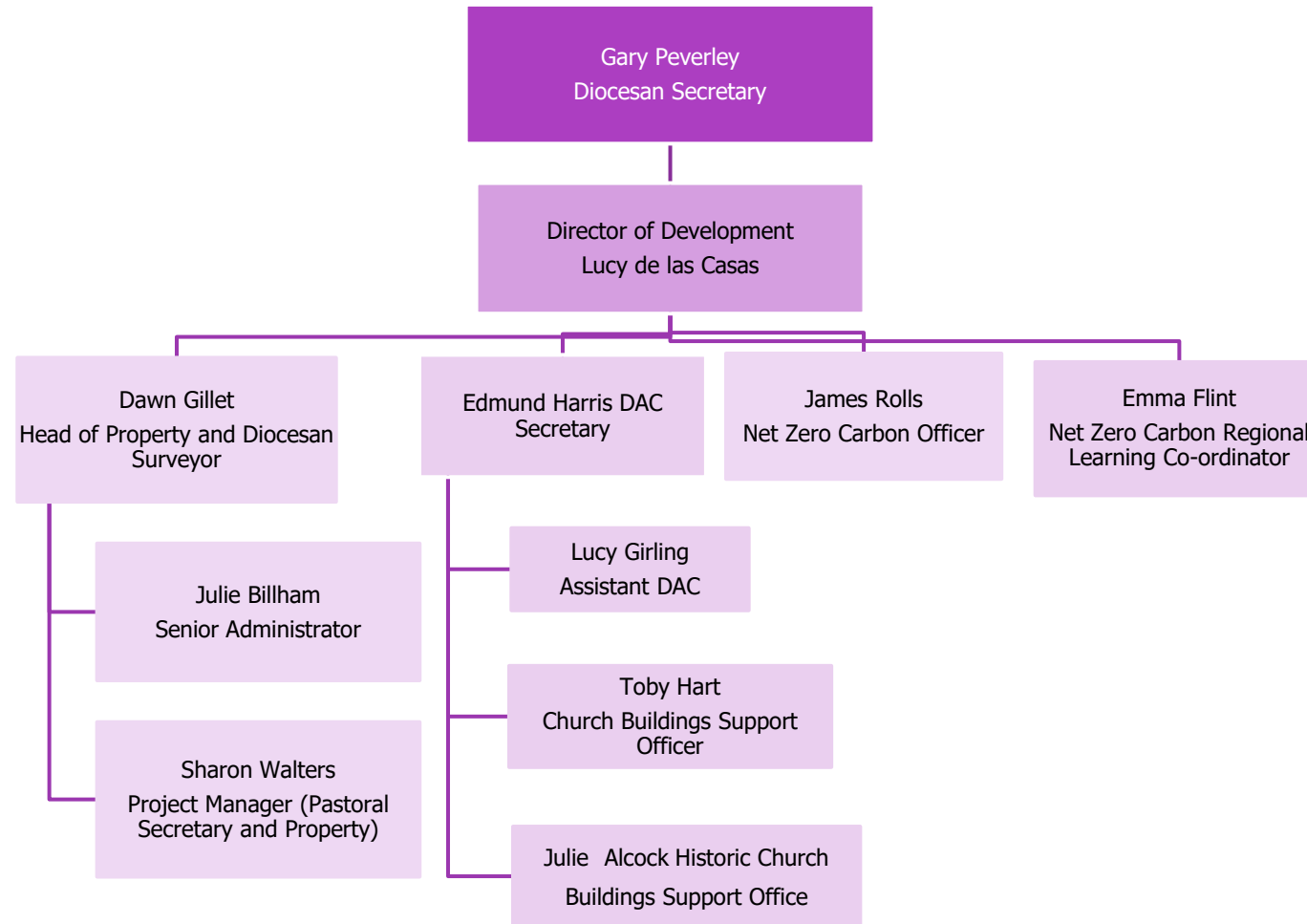
Engagement and Communications



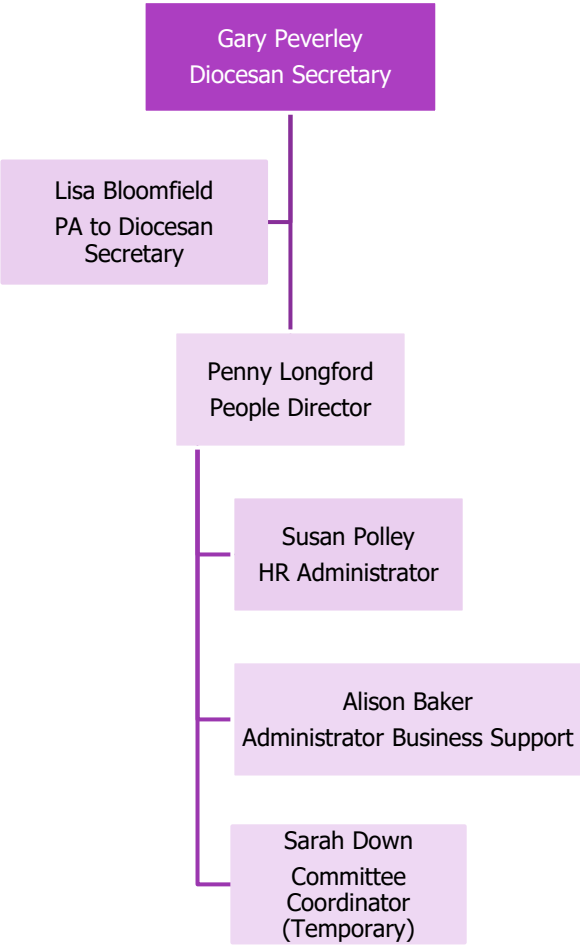
Finance, IT and Parish Resources Team



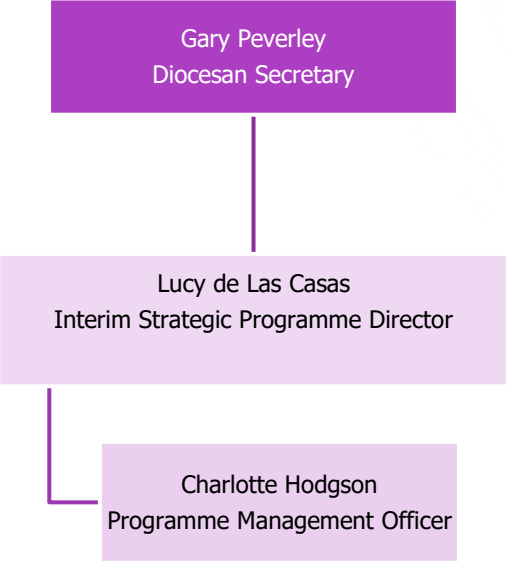
Church Buildings Support Team & Property



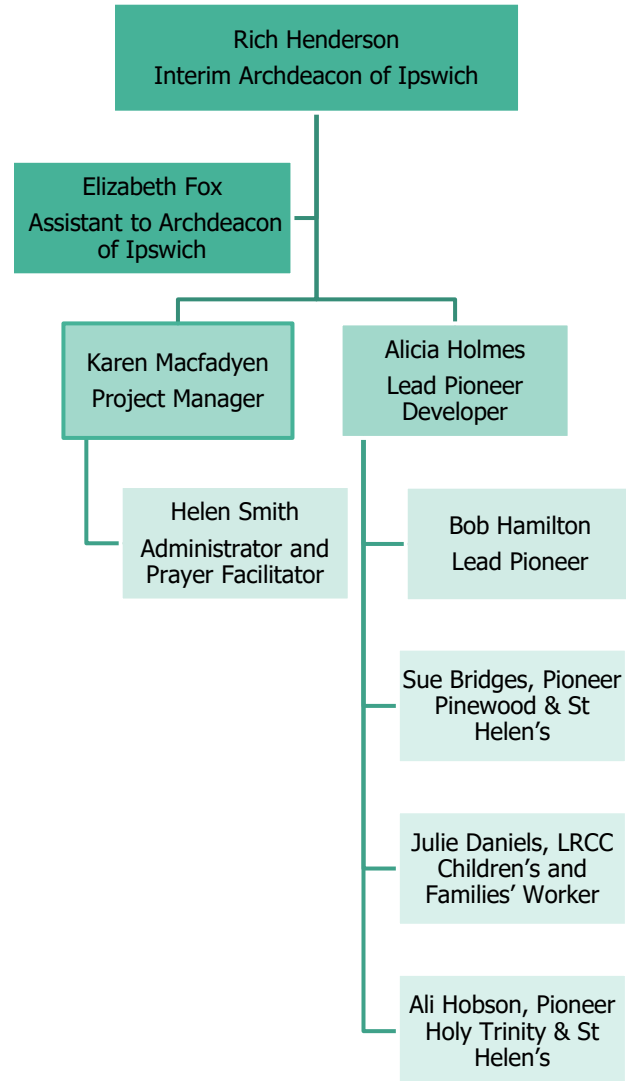
HR Governance



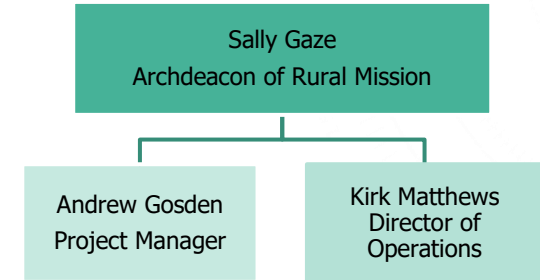
Strategy Programme Boards



Inspiring Ipswich



Lightwave



The Revd Diane Grano, Red Lodge Lightwave Rural Hub Leader and Co-Leader for the Lightwave Community
James Aggett Café Manager, Red Lodge
Alison Earl, Co Leader Mission Assistant, Red Lodge
Ben Wale, Emerge Lightwave Rural Hub Leader
Heather Land, Choir Director, Bungay Community