



St. Andrew's Church, Rushmere, Ipswich IP5 1DH

# PARISH PROFILE

*"So then, just as you received Christ Jesus as Lord, continue to live your lives in him, rooted and built up in him, strengthened in the faith as you were taught, and overflowing with thankfulness"*

COLOSSIANS 2:6-7



# Contents

## 1 The Parish

---

What we can offer you	3
Is God calling you to join us?	4
Who we are	5
Where are we	7/8
Worship	9
Church Family and Outreach	10/11
Developing our Vision	12

## 2 Our Ministry

---

Community Connections	13
Current Leadership	14

## 3 Buildings & Finance

---

Church & Church Hall	16
The Vicarage	17
Finance	18
Governance	19

## 4 Are you the right person for us?

---

Are you the right person?	20
What next?	21/22

## 5 The Diocese & Deanery

---

Diocesan Information	24-26
Inspiring Ipswich	27





## ① The Parish

# What we can offer you

We will offer our new vicar a very warm welcome into a church with a well-established, loving and caring congregation.

Our effective organisational structure will support you with enthusiastic and hard-working groups of people, including PCC sub-committees, a lay team, readers, intercessors, servers and volunteers who clean and maintain the church, hall and churchyard. We have well managed and stable finances. Our musical strengths include a choir, music group, bell ringers and organists.

Our new vicar can rely on our prayers, support, enthusiasm, skills and experience.





# Is God calling you to join us?

We are a Christ-centred, sociable and welcoming church family on the rural edge of urban Ipswich who are passionate about sharing God's love in our community. We are committed to the Diocesan Growing in God strategy that is embedded both in the Inspiring Ipswich initiative and in our parish plan for growth.

## WE SEEK PRAYERFULLY AN INCUMBENT WHO WILL:

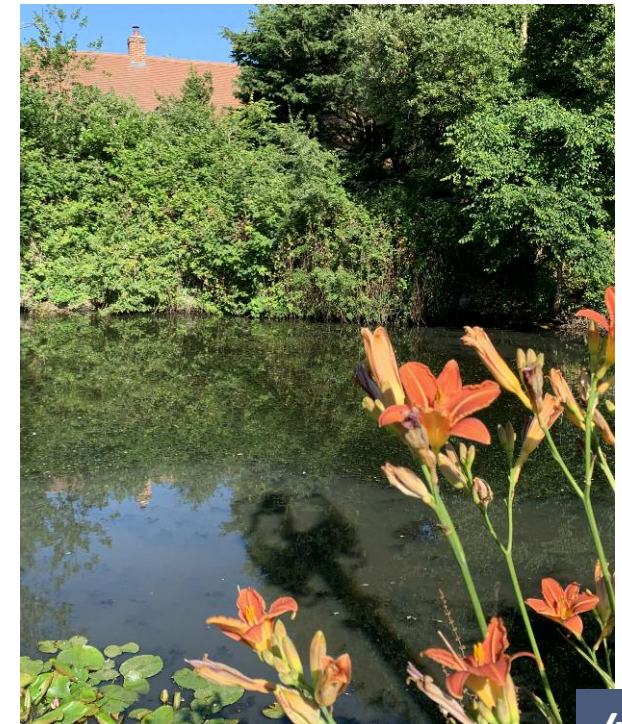
- Pastor and nurture us,
- Be a strong Bible based teacher and preacher,
- Have a strong sense of mission, both locally and globally,
- Support us as we face the challenges and opportunities ahead.

Our prayer is that this parish profile will present you with a sound basis to help you discern if we are the right church for you to lead.



**Go therefore and make disciples of all nations, baptising them in the name of the Father and of the Son and of the Holy Spirit, and teaching them to obey everything I have commanded you. And remember, I am with you always, to the very end of the age.**

**MATTHEW 28:19-20**





## ① The Parish

# Who we are

We are a 'middle of the road' church with evangelical aspirations to grow younger, in depth, in influence and in number.

There are currently 100 on the electoral roll, drawn from all age groups but predominantly retired.

We are committed to welcoming all people and recognise the importance of outreach.

Members are from a range of Anglican traditions and we are committed to welcoming all people in the name of Jesus.

## WHERE DO WE NEED TO GO?

- To grow and deepen our faith as a church and community.
- To deepen our personal discipleship to equip us to share the Good News of Jesus with others.
- To grow in number, particularly young families, children and young people.
- To work more closely with other churches to share the love of God in our local community.
- To develop links with the civil parish, schools, uniformed organisations and the Parish Council.

## RECENT CHALLENGES

We, like many churches, have experienced testing times as a result of the Covid pandemic and this has had an impact on our numbers, age profile, income, and the number of people who have been available to volunteer.

The congregation is older than the surrounding local community with fewer young volunteers.

We therefore see the need but feel thwarted and frustrated in our vision to respond to the Great Commission through the five marks of mission of the Church of England.

*We are committed to welcoming all people*









## ① The Parish

# Where we are

The parish of St. Andrew, Rushmere covers approximately 6 square kilometers of suburban and rural land on the north-east edge of Ipswich, the county town of Suffolk. It is bounded by the pleasant valley of the river Fynn to the north and open heathland to the south. The ring-road forms its western boundary while open farmland is to the east.

The church sits at the geographical centre of the parish and is kept open for visitors during the day.

The Parish contains parts of two Ipswich Borough electoral wards on the suburban edge of Ipswich and part of East Suffolk District Council electoral ward of Rushmere St. Andrew. The parish includes the rural village of Rushmere St. Andrew.

The predominant age group within the parish is 30-59 (mean 42) and the total population is approximately 8,500.

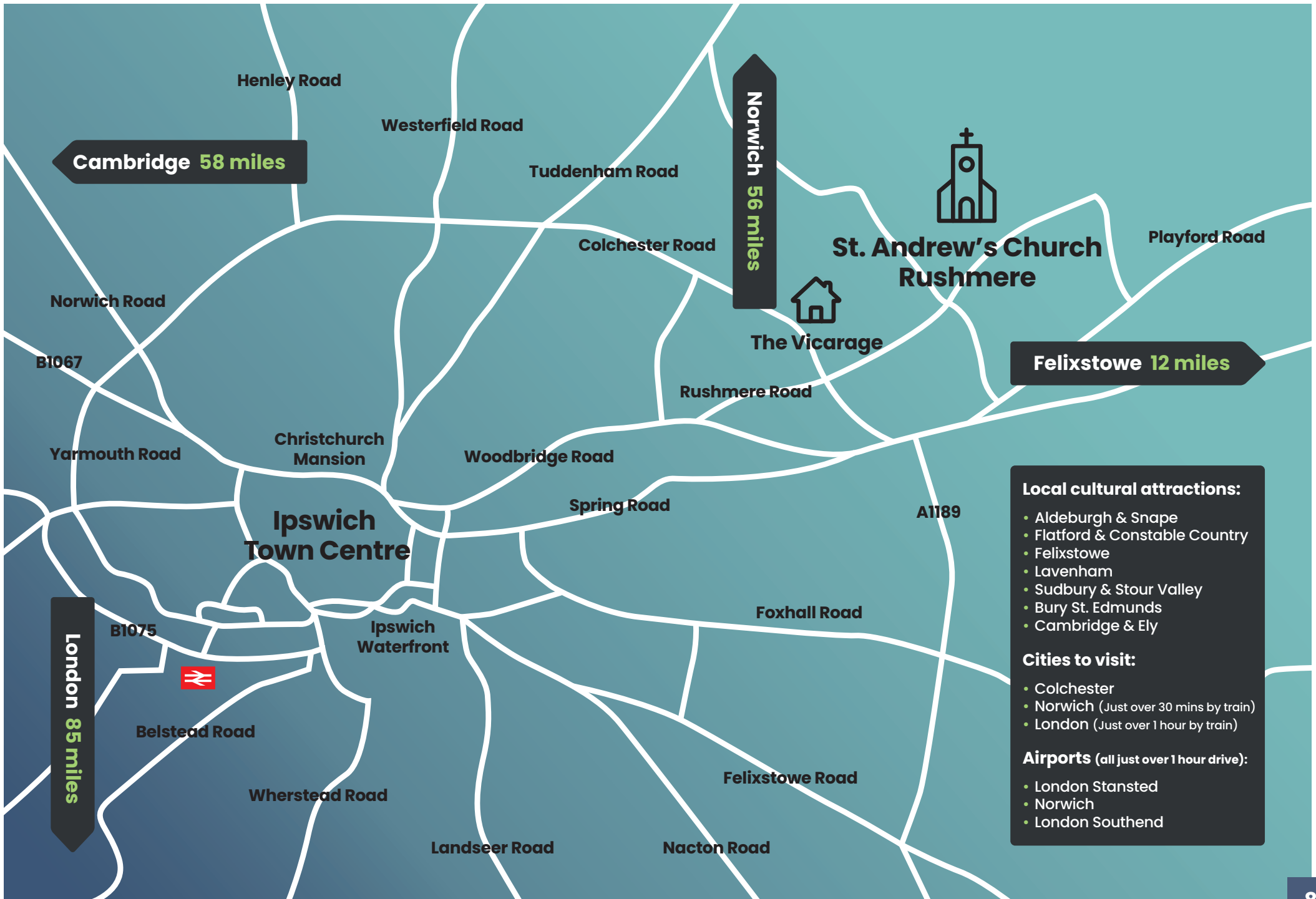
The housing mix within the whole parish is approximately 80% private and 10% social. The remaining 10% consists of rented, sheltered housing and care home accommodation. There are a number of sports and social clubs within the parish.

Apart from the employment offered by three parades of shops, three schools and other community-based enterprises the majority of people work in Ipswich and the surrounding towns.

The map indicates the position of the parish of St. Andrew, Rushmere in relation to some of the major transport routes and towns in East Anglia.

*We are a parish church seeking to serve Jesus in the local community*





- Local cultural attractions:**
- Aldeburgh & Snape
  - Flatford & Constable Country
  - Felixstowe
  - Lavenham
  - Sudbury & Stour Valley
  - Bury St. Edmunds
  - Cambridge & Ely
- Cities to visit:**
- Colchester
  - Norwich (Just over 30 mins by train)
  - London (Just over 1 hour by train)
- Airports (all just over 1 hour drive):**
- London Stansted
  - Norwich
  - London Southend



## ① The Parish

# Worship

There is a regular monthly pattern of worship at St. Andrew's.

## SUNDAYS

- 8.00am: every week: Holy Communion (said), Common Worship, with short reflection
- 10.00am: first and third: All Age Worship (non-communion services)
- 10.00am: second and fourth: Holy Communion, Common Worship, one being with sung setting and introit
- 10.00am: fifth: Holy Communion, Common Worship, family focused
- 4.00pm: third: t@4 an informal family service – tea, activities and worship



## THURSDAYS

- 10.00am: every week: Holy Communion
- 11.00am: monthly: Toddler service



As part of our commitment to providing a warm and relaxed atmosphere we serve breakfast in the church hall after 8am communion and coffee after the 10am main service.

Uniformed organisations are welcomed to parade during the main service of Worship around three times a year.

Music is an important part of our worship and we have a group of musicians and singers who support a mix of traditional and modern hymns from A&M (RS) and Mission Praise. Some of the singers form a small robed choir for Sunday Holy Communion services Evensong and Festivals. We currently await the appointment of a Director of Music.

## OCCASIONAL OFFICES & POLICIES

### Baptism

Open policy. St. Andrew's Church accepts those who request baptism so long as it is practically possible. Over the last five years there has been an average of 12 per year.

### Communion

Up until now Communion before confirmation has not normally been practised at St. Andrew's Church.

### Weddings

Over the last five years an average of 9 couples have been married at St. Andrew's a year. Divorcees are normally welcome for marriage, subject to discussion with the incumbent.

### Funerals and burials

St. Andrew's has a 'Closed Churchyard' but is available for burial of cremated remains only. The civil Lawn Cemetery that adjoins our churchyard is open for full burials. Over the last five years there have been an average of 30 funerals per year and 35 burials either in the churchyard or cemetery per year.



## ① The Parish

# Church Family and Outreach

## CHILDREN, YOUTH AND FAMILIES

We have a group of dedicated volunteers who are supported by a part-time Youth and Families' Worker. We aim to provide opportunities for weekly contact through Sunday Worship and mid-week activities.

### TODDLER GROUP

This group runs once a week during term-time for pre-school children and their parents and carers. Our Toddler Service is held once a month in church.

### SUNDAY SCHOOL

This is led by parents who are supported by the self-supporting minister and others. It is held twice a month on Sundays where there is not family focused worship. During the pandemic we held Sunday school by Zoom.

### CHILDREN'S EVENTS

These events which are similar in format to 'Messy Church', are held several times a year and focus on major festivals, they attract children who do not normally have contact with the church and who enjoy the mix of Bible teaching, worship, craft and food.

### OPEN THE BOOK

The Bible Society project takes Bible stories into primary schools in dramatic form. We are joined by our friends from Colchester Road Baptist Church, Rushmere Community Church and Rushmere Baptist Church to take 'Open The Book' to years 1 to 4 at Rushmere Hall Primary School twice each term.

### YOUTH CLUB

Youth Club is led by the Youth and Families' Worker and is supported by volunteers from within and outside the church family. Young people can volunteer with us to meet the requirements of the Duke of Edinburgh Award scheme. It runs every Wednesday evening during term time for children in Years 4 to 11. It attracts children who attend local Primary and High Schools for whom this might be their only contact with 'church'.





## ① The Parish

# Church Family and Outreach

## ADULTS AND OLDER PEOPLE

We connect regularly with adults and older people through a range of activities held during the week.

### BIBLE STUDY GROUP

We meet on a regular basis to study either a book of the Bible or a theme. We have used 'Open Home, Open Bible' video material as a start of some discussions. Since the pandemic the group has met on a monthly basis via Zoom. A further group has met to explore prayer. Lent courses have either been in small groups or as a large group meeting in the church or hall. Recent themes have included 'Approaching Jerusalem' & 'The Way'.

### GROWING IN DEPTH SESSIONS

Over the last few years the parish has arranged study sessions on a number of themes as part of the Growing in Depth initiative for the Diocese. The slots have been led by members of the congregation and have included times to break into small groups to reflect on the theme and to be creative. Recent themes have included 'Approaching the Psalms', 'Jesus: King of Our Life Story', and 'the Creed'.

### THE OPEN DOOR

As part of our Parish Plan responding to the Inspiring Ipswich initiative, we now offer a warm welcome together with refreshments, for visitors to the church and grounds.

This is hosted by pairs of volunteers each weekday morning and has enabled us to connect with many people.

### LUNCH CLUB

This is held once a week (apart from August) for older and vulnerable people. It is run by volunteers who provide transport, cook and serve a nourishing meal for everyone attending.

### MOTHERS' UNION

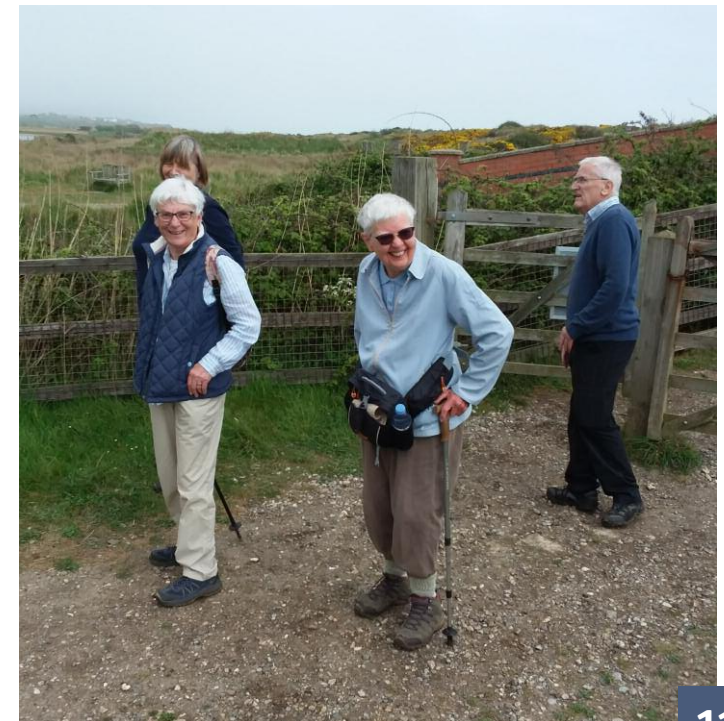
St. Andrew's Mothers' Union is a thriving branch, currently with 40 members, who meet monthly on a Wednesday afternoon for worship and to enjoy a varied programme, which includes speakers on a wide range of interesting subjects, and also crafts and visits. Once a month, the Thursday Holy Communion service has a focus on MU prayer concerns. We also raise money for MU charities and have a monthly 'knit 'n' natter' group where we make various items such as hats for seafarers.

### GAMES AFTERNOON

This is open to all and held once a month. It provides an opportunity for people to socialise whilst playing board games etc. This activity stopped during the pandemic and we are still hoping for more people to have the confidence to come back to it and have some fun!

### WALKING GROUP

Meeting up once a month, the walking group consists mainly of people who attend church but is open to anyone. The walk locations vary and transport is provided for people who do not drive. Eating is an integral part of the walk!





## ① The Parish

# Developing our Vision

## WHERE DO WE WANT TO BE?

## GROWING YOUNGER, IN DEPTH, IN NUMBER, AND IN INFLUENCE

- To grow in number by building a wider age range within our congregation and to increase the number of families playing a role in Church Life.
- To develop explorer groups to introduce people to Jesus.
- To grow in influence through welcome and hospitality by developing the 'The Open Door' Initiative.
- To grow in influence by developing a presence in the local schools.
- To draw people to Jesus by developing relationships with the families of children attending special craft events, Youth Club, Sunday School and who has brought their children to baptism.
- To continue to Grow in Depth through regular house groups and Bible study sessions.
- To be more responsive to the needs of the parish.
- To grow in influence by developing our online and social media presence.





## ② Our Ministry

# Community Connections

We produce an informative and useful quarterly magazine “Rushmere Outlook” which is delivered to each home in our church parish (more than 3,000) by volunteers. Many of the magazine deliverers do not attend church but are very happy to help with this.

We support **Friends Round Friday** which is held every Friday morning in the local Scout Hall, providing coffee and friendship to the local community.

In September 2021 we took part in a **Community Fun Afternoon** held on the local recreation ground. This involved all the local churches and a variety of organisations who offer services and support to families. This was very successful and is now going to be an annual event which we will continue to support.

On the fourth Sunday of every month we join together with people from a group of local churches for **Evening Worship**. Each church takes it in turn to host the service. It is a time of fellowship with other Christians and helps us to strengthen our links with other churches.

We actively support the work of local charities Families In Need (**FIND**) also Tools With A Mission (**TWAM**). We support Church Mission Society (**CMS**) Reaching the Unreached of southern India (**RTU**) and other national and international charities.

We recently held a series of six evening sessions to discuss **Christianity and Climate Change** and are keenly working towards our Eco Church silver award.

**Quiz nights** and **Coffee mornings** are held quarterly and attract many people from outside the congregation. Our church has been the venue for afternoon concerts featuring a variety of musicians from outside the church. These were mainly organised by our former Director of Music (now retired) and are attended by the local community.

We held our **Platinum Jubilee Celebrations** on 3rd and 4th June and met many people from our local community with whom we had not previously had contact. We were blessed with good weather and the events were a great success, enjoyed by all who came.





## ② Our Ministry

# Current Leadership

### CURRENT CHURCH STAFF

- an Associate Priest (SSM) who presides at Holy Communion, preaches and supports church activities including youth and children's work;
- two Readers who lead main services in church and informal seasonally themed services in the hall. They support large areas of Growing in Depth church activities such as study and discussion days, Bible study, house and Lent groups;
- a paid part-time Youth and Families' worker who takes a lead on the monthly t@4 service and 'Open the Book' in the local Primary school, and runs a weekly Youth Club;
- a paid Musical Director/organist (currently vacant).

### MINISTRY LEADERSHIP TEAM

The Ministry group (during vacancy) consists of: Associate Priest, Readers, Youth and Families' Worker, Church Wardens, and Chair of Pastoral Panel.

### LAY INVOLVEMENT

Thirteen members of the congregation are authorised to assist with the administration of Holy Communion in services and some assist with Home Communion for those unable to attend services.

Other members of the congregation assist with the leadership of the thriving midweek Youth Club, the Sunday School and the Toddler Group.

Further members are responsible for the Pastoral and Social work of the Church.

The PCC secretary maintains the Church Diary and updates the Church Website. There is also a quarterly Parish OUTLOOK magazine and a fortnightly FOCUS leaflet containing up-to-date information and notices.

The Parish has embraced the Deanery initiative Inspiring Ipswich and a Growth Panel was established to develop this planning for the four aims of that initiative: (Growing Younger, Growing in Depth, Growing in Number and Growing in Influence).









### ③ Buildings & Finance

# Church & Church Hall

## THE CHURCH

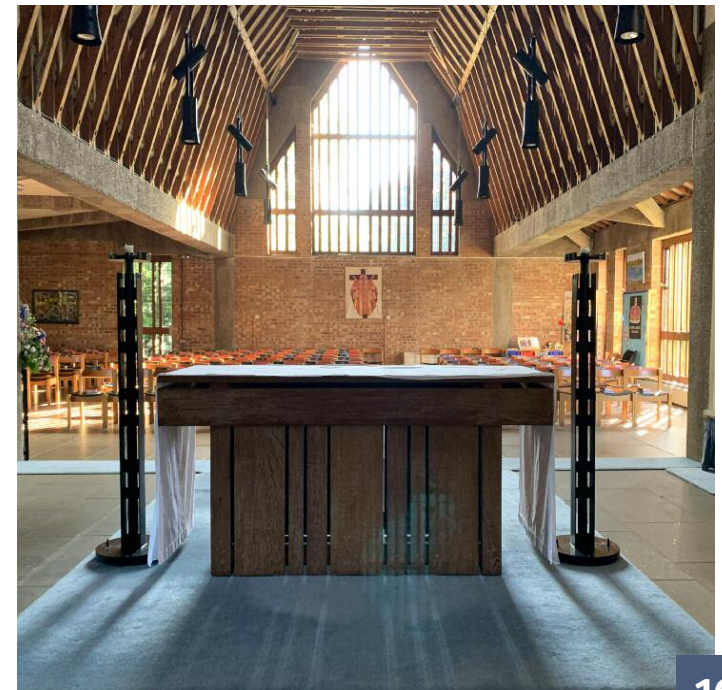
This traditional Suffolk village church dating from Norman times, was rebuilt in 1861, and then dramatically extended in 1968. The extension to the East end of the Church designed by George Pace, created a large open space with a central raised communion table. There is now seating for between 200 and 300 people. There is a fine perpendicular Tower built in 1538 with a peal of six bells, as well as a clock bell. The bells are regularly rung for services and weddings. We also have a fine church organ.

## THE CHURCH HALL

In 1987 a spacious hall with kitchen and toilets was added to the south-east side of the church. This includes a new entrance lobby that connects the church with the church hall providing full disabled access to the hall, toilets and the Church.

## THE VESTRY BLOCK

The 1968 building programme also provided a Vicar's vestry and a choir/parish room for meetings. These rooms connect to the north-west corner of the church.





### ③ Buildings & Finance

# The Vicarage

The present vicarage, at 253 Colchester Road, Ipswich, IP4 4SH is a large family house with three reception rooms, five bedrooms and large garden. The Diocesan Parsonage Board carried out an extensive refurbishment during late April and early May 2017, with new heating system, kitchen,

bathroom and carpets. These refurbishments have made a comfortable vicarage for the new incumbent.

The parish map indicates the position of the church on the eastern fringe of the county town of Ipswich. The parish occupies the area of land east of the Ipswich by-pass

(Colchester Road/Heath Road) as far as Playford and Kesgrave to the east.

The vicarage is situated near to the centre of population, on Colchester Road and is convenient for Rushmere Road that leads to the church.



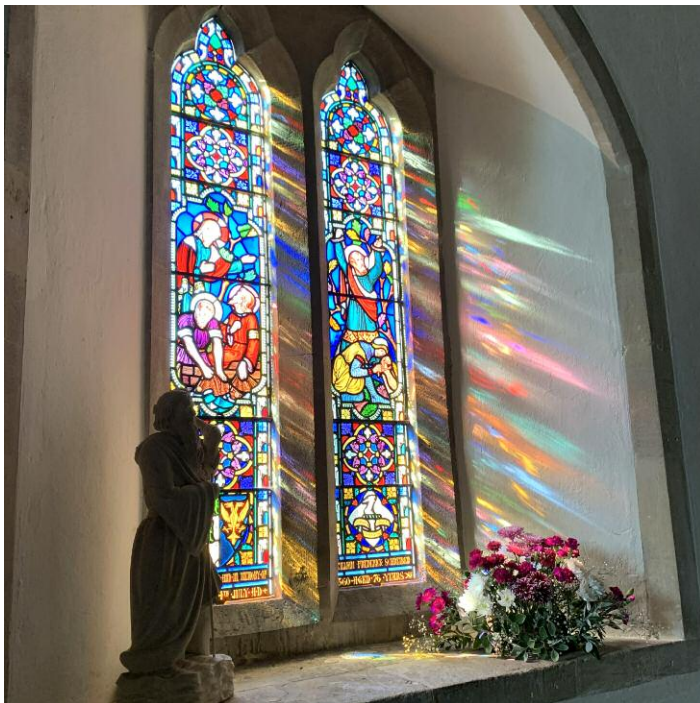


### ③ Buildings & Finance

# Finance

St. Andrew's is financially sound with healthy reserves despite the impact of the pandemic.

Over the years 2017-2019, the Parish broke even each year with income and expenditure averaging £90,000. In 2020-2021, income averaged £75,000 and expenditure £83,000. The combined shortfall of £16,000 was met from reserves; the Parish Share was paid in full, as it had been for the previous 6 years.



#### In 2021, income was:

Planned Giving (including Gift Aid)	£52,000
Other	£22,000

#### And Expenditure breakdown was:

Parish Share	£67,450
Clergy expenses (paid in full)	£600
Employees (net of JRS) and Mission	£6,750
Running costs / Admin	£10,300

Our finances, like many other churches, suffered due to the pandemic, though in 2022 we aim to break even; Parish Share of £67,800 and Clergy expenses will continue to be paid in full.



### ③ Buildings & Finance

# Governance

**The incumbent is supported by two churchwardens and a deputy warden who with the church health & safety officer and the safeguarding officer oversee all fire, H&S and safeguarding issues.**

The incumbent, as the PCC chair, is supported by the PCC secretary, the church treasurer and the senior warden as lay vice-chair. The PCC has nine elected lay members and three elected members of deanery synod.

The PCC deals with strategy and oversight having a number of sub-committees (panels) which carry forward PCC decisions, as well as initiate proposals for implementation within their scope. These panels have a mix of PCC members and members of the congregation covering Growth - Growing in God, Youth - young people & families, Social - community and outreach, Giving - charity support, Education and Pastoral activities.

The safeguarding officer organised a basic half day training course for the whole congregation and maintains a current register of all those trained at the appropriate levels for their role in the church community; as well as ensuring DBS certification is in date. The church leaders at St. Andrew's take this whole issue very seriously for all the church family, especially our young people and any who may be vulnerable in any way.

We consider the role of the incumbent to be critical in leading by example to ensure best safeguarding practice.





⑤ Are you the right person for us?

# Are you the right person?

## WE SEEK A NEW INCUMBENT WHO WILL:

- Communicate their own deep love of Jesus Christ to all ages and equip church members to do the same;
- Be a sound biblical teacher, and communicator;
- Support their Christian ministry with an active prayer life;
- Develop and encourage the talents of individuals;
- Place an emphasis on pastoral work and to be visible in the parish;
- Support children's and youth work;
- Be comfortable with both traditional and modern forms of worship;
- Be a good team player;
- Have a vision for evangelistic mission in the parish;
- Have a collaborative approach towards other churches within the parish;
- Be innovative, supportive and encouraging;
- Be visible in local schools.





## ⑤ Are you the right person for us?

# What next?

Thank you for your interest in St. Andrew's, Rushmere. We hope you have gained some sense of who we are, and of the possibilities and opportunities that there are for ministry here.

For an informal conversation about the parish please contact the Archdeacon of Ipswich:  
[archdeacon.rhiannon@cofesuffolk.org](mailto:archdeacon.rhiannon@cofesuffolk.org)

Further information about the parish, schools and local area will be found by accessing these links:



### OUR CHURCH

Our Website: [www.standrewschurchrushmere.onesuffolk.net](http://www.standrewschurchrushmere.onesuffolk.net)

Facebook [www.facebook.com/standrew.rushmere](https://www.facebook.com/standrew.rushmere)

Our Diocese: [www.cofesuffolk.org](http://www.cofesuffolk.org)

Mission: [www.inspiringipswich.org](http://www.inspiringipswich.org)

### OUR CHRISTIAN BROTHERS AND SISTERS

Colchester Road Baptist Church: [www.crbc.org.uk](http://www.crbc.org.uk)

Rushmere Baptist Church: [www.rushmerebaptist.org.uk](http://www.rushmerebaptist.org.uk)

Rushmere Community Church: [www.rccipswich.org.uk](http://www.rccipswich.org.uk)

Woodbridge Road Salvation Army: [www.ipswichcitadel.co.uk](http://www.ipswichcitadel.co.uk)

All Saints, Kesgrave: [www.asksgrave.org](http://www.asksgrave.org)

Mothers' Union in Suffolk: [www.musuffolk.org.uk](http://www.musuffolk.org.uk)

### LOCAL COUNCILS

Rushmere St. Andrew Parish Council: [www.rushmerestandrew.onesuffolk.net/parish-council](http://www.rushmerestandrew.onesuffolk.net/parish-council)

Ipswich Borough Council: [www.ipswich.gov.uk](http://www.ipswich.gov.uk)

East Suffolk District Council: [www.eastsuffolk.gov.uk](http://www.eastsuffolk.gov.uk)

Suffolk County Council: [www.suffolk.gov.uk](http://www.suffolk.gov.uk)



## ⑤ Are you the right person for us?



### LOCAL SCHOOLS

Rushmere Hall Primary: [www.rushmerehallprimaryschool.com](http://www.rushmerehallprimaryschool.com)

Northgate High School: [www.northgate.suffolk.sch.uk](http://www.northgate.suffolk.sch.uk)

St. Christopher's Academy: [www.raedwaldtrust.com/st-christophers-academy](http://www.raedwaldtrust.com/st-christophers-academy)

St. Alban's High School: [www.st-albans.suffolk.sch.uk](http://www.st-albans.suffolk.sch.uk)

St. John's C of E Primary School: [www.st-johns.suffolk.sch.uk](http://www.st-johns.suffolk.sch.uk) (School not within the Parish)

### HEALTH

General Practice: [www.tworiversmedicalcentre.co.uk](http://www.tworiversmedicalcentre.co.uk)

Ipswich Hospital: [www.esneft.nhs.uk](http://www.esneft.nhs.uk)

St. Elizabeth Hospice: [www.stelizabethhospice.org.uk](http://www.stelizabethhospice.org.uk)

Tree House Children's Hospice: [www.each.org.uk](http://www.each.org.uk)

### CHARITIES WE SUPPORT

FIND (Food Bank): [www.findipswich.org.uk](http://www.findipswich.org.uk)

Tools with a Mission: [www.twam.uk](http://www.twam.uk)

Reaching the Unreached: [www.rtu.org.uk](http://www.rtu.org.uk)

Church Mission Society: [www.churchmissionsociety.org](http://www.churchmissionsociety.org)

### OTHER

Rushmere Good Neighbour Scheme: [www.rushmeregoodneighbour.webs.com](http://www.rushmeregoodneighbour.webs.com)

*Parish Profile for St. Andrew's, Rushmere last updated: September 2022*







## ④ The Diocese & Deanery

# Diocesan Information

The diocese covers the county of Suffolk, excluding the area around Lowestoft in the north-east, and one parish in Essex. It is a mainly rural diocese with a large number of small villages, plus market towns including Woodbridge, Halesworth, Sudbury and Beccles and the cathedral town of Bury St. Edmunds with its historic ruins of the old Abbey.



## WHERE ARE WE?

Ipswich is the county town with a population of about 135,000. The county embraces historic places of interest such as Sutton Hoo, culture at Snape with the famous annual Aldeburgh music festival, is on the Heritage coast and is a haven for lovers of natural history and birdlife. The busy port of Felixstowe is at the end of the A14 which runs via Cambridge to the Midlands and the A12 which gives access to London and the Norfolk Broads.





#### ④ The Diocese & Deanery

# Diocesan Information

We are often known as 'the Church of England in Suffolk'. The diocesan bishop is the Right Reverend Martin Seeley, and the suffragan bishop is the Right Reverend Dr Mike Harrison. Both work from the Bishop's House in Ipswich. They work together closely to help us shape our vision and strategy, and amongst a plethora of other tasks offer regular teaching mornings to nurture the faith of people in our congregations – and a regular Blog ([www.facebook.com/BishopsCofEsuffolk/](https://www.facebook.com/BishopsCofEsuffolk/)) which can be found on Facebook.

There are 3 archdeaconries and over 450 churches where visitors will find a wide range of worshipping styles, from the traditional to contemporary, as well as fresh expressions and growing numbers of 'Lightwave' groups for those who haven't connected with traditional church previously. We also work closely with our 88 Church of England primary schools. All this is, of course, supported by a small and committed diocesan staff based in the diocesan office in Ipswich.



THE CHURCH  
OF ENGLAND  
**Diocese of St Edmundsbury  
and Ipswich**



## ④ The Diocese & Deanery

# Diocesan Information

### WHAT IS OUR VISION?

Our diocesan vision is to be 'Growing in God', aiming to grow 'flourishing congregations making a difference'. This vision was accepted by Diocesan Synod in 2014 and since then we have been focussing on four key priorities:

- Growing in Depth: responding to the call of Christ in every part of our lives
- Growing in Number: drawing the contacts we have into the life of God's kingdom
- Growing in Influence: reaching beyond ourselves in our impact on the wider world
- Growing Younger; building churches whose age-range reflects our communities

Parishes are encouraged to use a simple Mission Action Planning tool to help us all to focus on these priorities and how they might be worked out in each different context. We are trusting God that this vision, underpinned by a commitment to Christian stewardship, will bear fruit as we look to the future.

As part of this vision, we have received Strategic Development Funding for two major projects: Inspiring Ipswich, overseen by the Archdeacon of Ipswich which aims to grow the church through church planting, fresh expressions, revitalisation of existing churches and reaching out to those who live in the town, and 'Growing God in the Countryside', overseen by the Archdeacon for Rural Mission, which focusses on developing Rural Resourcing Churches and nurturing and discipling new Christians through small Lightwave groups.

**We have also been part of a pilot scheme exploring how we can use our church buildings more creatively both for those who worship regularly and for the benefit of our communities and many churches have benefitted from this.**

**We are broadening our vision through a growing partnership with the diocese of Kagera in Tanzania, with fruitful visits and links being established.**

### HOW CAN WE DO THIS?

We value our huge range of different ministries: we have over 100 stipendiary clergy, plus many SSM and PTO clergy as well as lay and ordained chaplains who can be found in such diverse places as schools, prisons, hospitals, hospices, the army, RAF and the police. Some clergy are ordained to serve in their local benefice through our pioneering 'auxiliary ordination pathway' which enables people's vocations to ordained ministry to be discerned within the diocese.

All clergy work alongside lay ministers – Readers, elders, and the growing number of people exercising recently introduced licensed ministries: pioneer ministers, evangelists, youth ministers and children's and family workers. Our ministry deployment principles encourage teams or clusters of lay and ordained ministers to work together so that clergy feel less isolated and ministry resources the mission of the church more effectively. We are just beginning to develop the principle of 'local ministers' in our benefices, releasing people's gifts to serve in their locality.

We are excited about these new developments which are playing an important part in our diocesan vision of Growing in God.

So, in summary: As our Growing in God vision states, we aspire to be people who know that 'God is with us, gathering us as Christ-centred communities, calling us to make Christian disciples, sending us in loving service, empowering us by the Holy Spirit'.

**We hope you will come and join us on our journey!**

To find out more, visit [www.cofesuffolk.org](http://www.cofesuffolk.org)





#### ④ The Diocese & Deanery

# Inspiring Ipswich

Inspiring Ipswich is an imaginative and exciting initiative of the Diocese of St. Edmundsbury and Ipswich. It spans seven years from early 2019 to early 2026 and during this period it seeks to strengthen the existing 24 churches within the deanery of Ipswich, helping them 'to communicate good news and make new disciples', as well as adding 25 new worshipping communities into the mix. Front and central is the overall aim of praying for and nurturing the faith of 1500 new Christians across the town.

With the help of a substantial and unprecedented grant from the Church Commissioners, Strategic Transformational Funding, and a small central Inspiring Ipswich team the project has helped most parishes in the deanery to have a Mission Accompanier to energise a local learning community. Central courses such as 'Leading your Church into Growth', 'Mission-Shaped Ministry', Evangelist training, Alpha training and the 'Growing Leaders' course are part of the offer and the support of two full-time Deanery Pioneer Developers is available for those leading fresh expressions of Church.

One of the primary goals of Inspiring Ipswich is to help at least 5% of the population (around 7,500 people) enjoy an opportunity to explore faith, and our prayer is to offer Alpha or an equivalent course to over 1000 people.

Inspiring Ipswich is also helping congregations to set up new worshipping communities, such as Wellbeing churches, Messy Church and a number of church plants such as River Church, LRCC and Bridge Church.

It is an exciting and friendly deanery to be in. In short, we believe that that any prospective incumbent at St. Andrew's would not only find themselves warmly welcomed within the church and parish but would also find themselves at the heart of an inspiring vision and team in the deanery.

