



David Jones, Crucifixion, 1924 Wood-engraving on paper, from A Child's Rosary Book

DAVID JONES AND THE WAY OF THE CROSS

A JOURNEY THROUGH THE ART OF ATTENTION



The Artist, 1937 Wood engraving on paper, Private collection



Sketch to frontispiece for *In Parenthesis*. Private collection



Nativity with Beasts and Shepherds, 1928

Drypoint, Private collection



Flora in Calix-Light, 1950 Pencil and watercolour, Kettle's Yard University of Cambridge



Crucifixion, c. 1925 Pencil and watercolour, Private collection



Human Being, 1931 Oil on canvas, Private collection

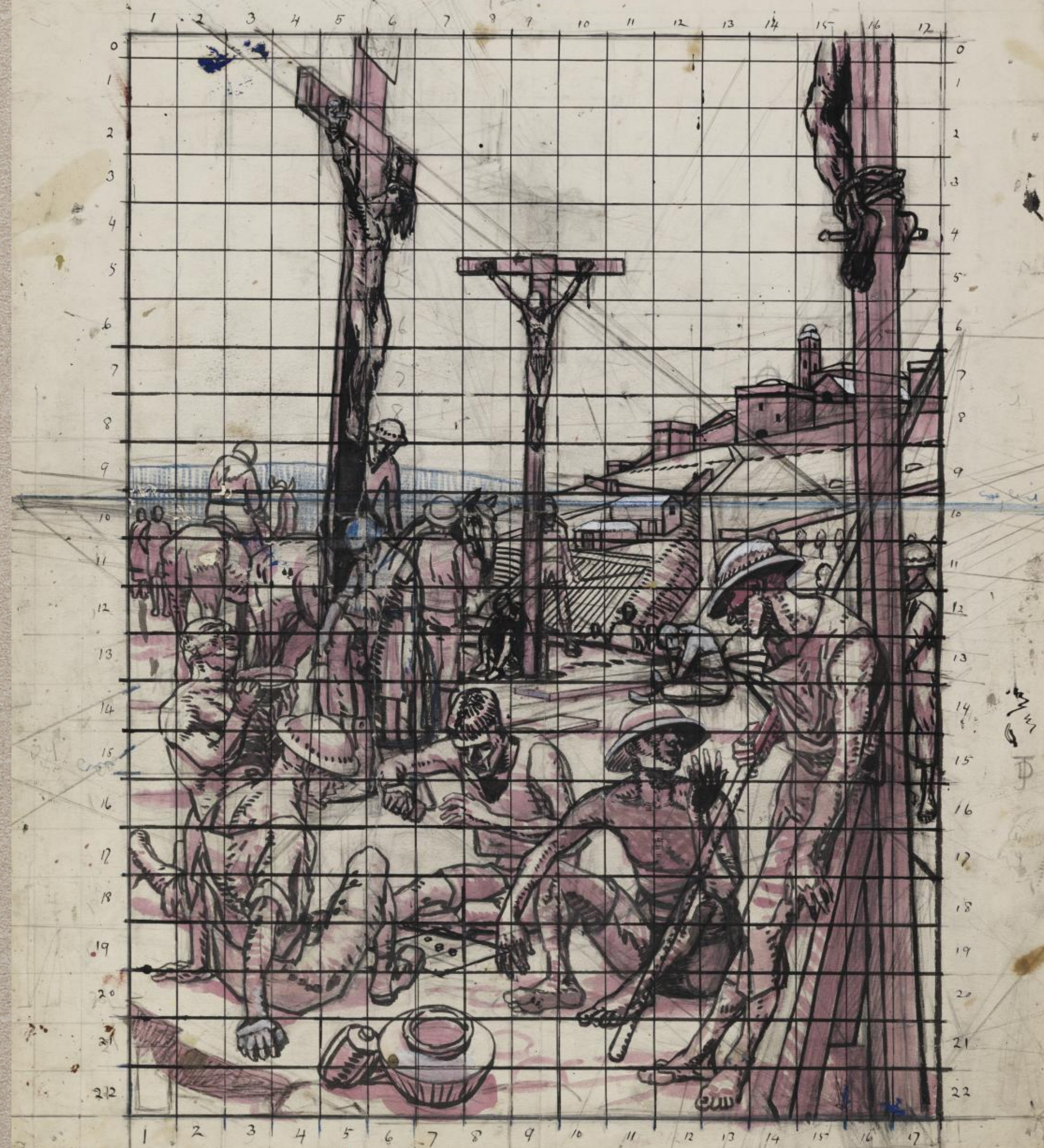


© Georgetown University
All Rights Reserved

Sancta Helena, c. 1925 Harmon Grisewood papers, Georgetown University Library

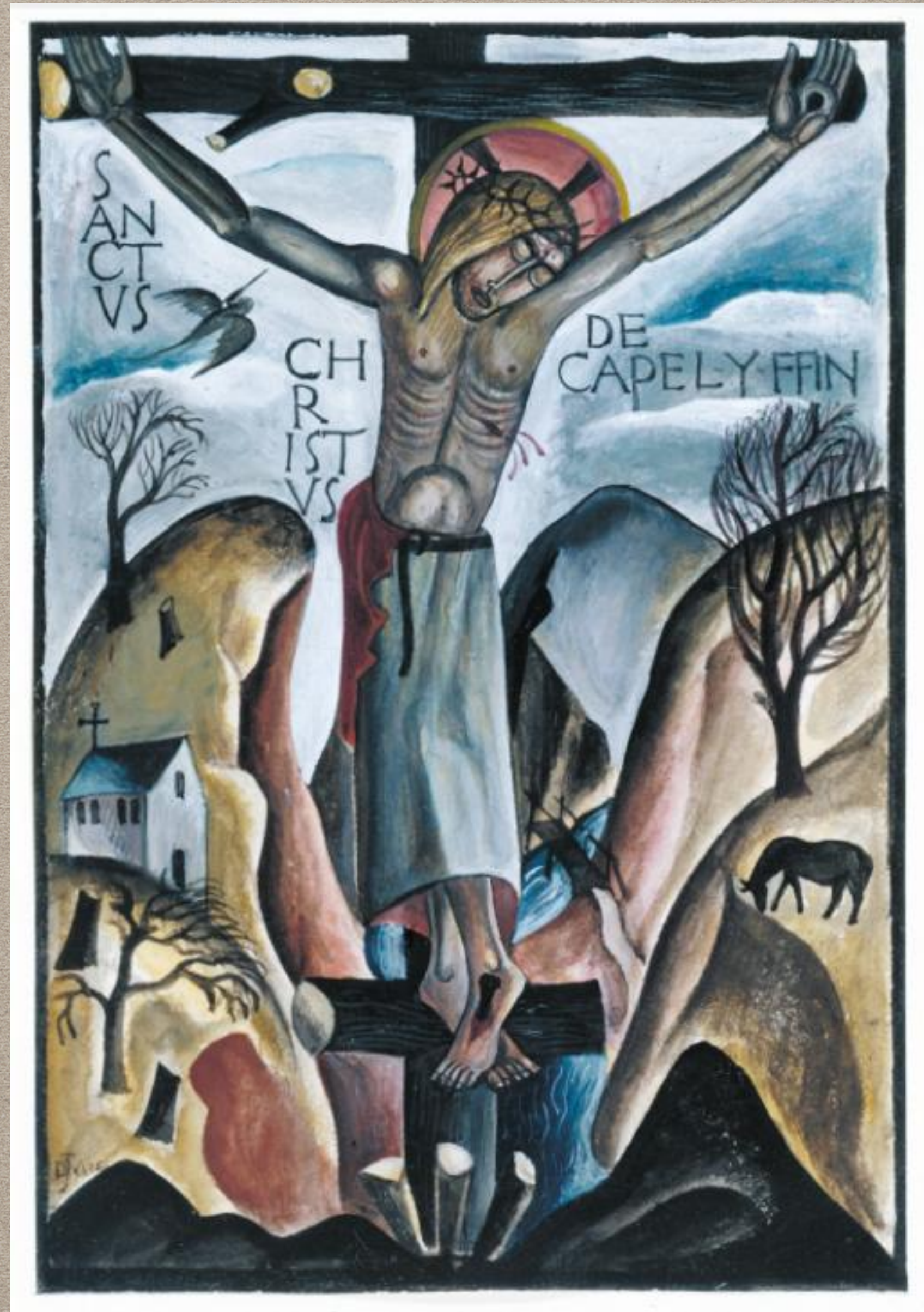
Study of soldiers playing dice at the foot of the Cross, c. 1919

Pen, ink and colour wash on paper, Tate Archive





Jesus Mocked, 1922 Oil on wooden boards, Amgueddfa Cymru - National Museum of Wales



Sanctus Christus de Capel-y-ffin, 1925 gouache and pencil on paper, Tate



ECCE HOMO

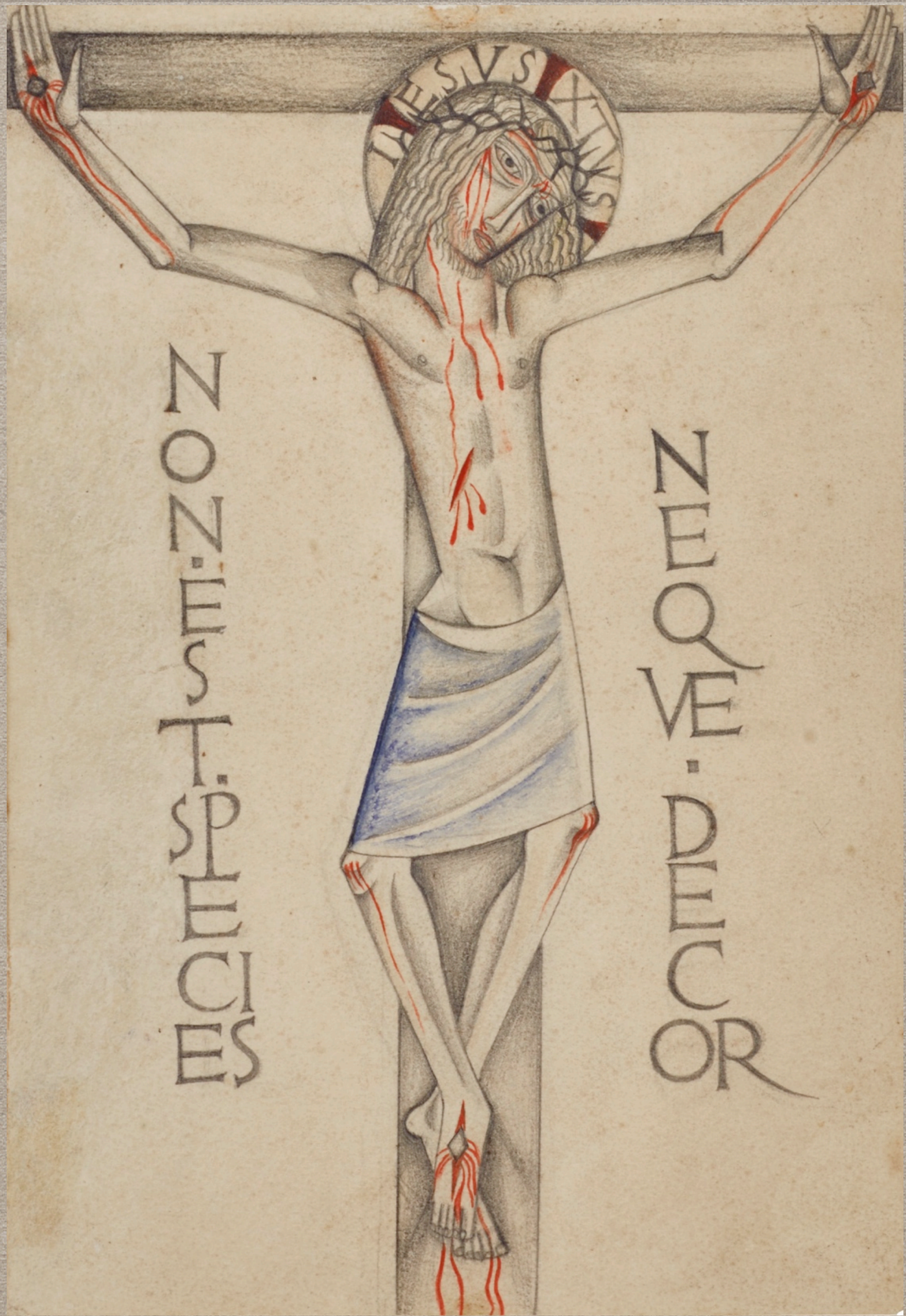
CORPUS

VIS QVIA PER IN **C**APITE
CARNATI *
 VERBI MYS
 JO TERIVM N
 JOVA MEN **O**RTA
 TIS NOST
 RÆ OCVLIS
 LVX TVÆ
 CLARITATIS
 INFVL SIT

QUIA PER INCARNATI, 1949-50 Watercolour and Chinese white,
 Kettle's Yard University of Cambridge

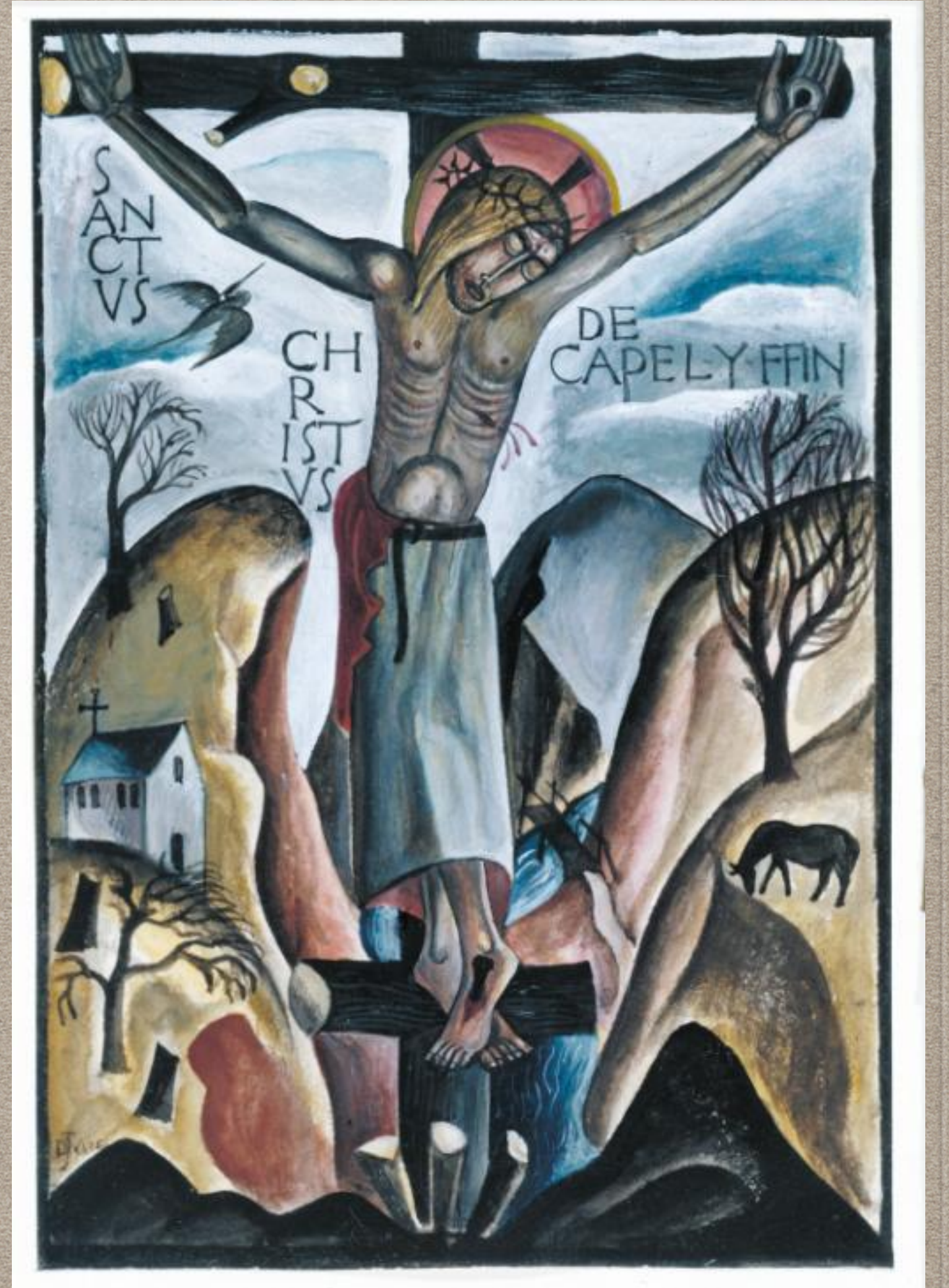
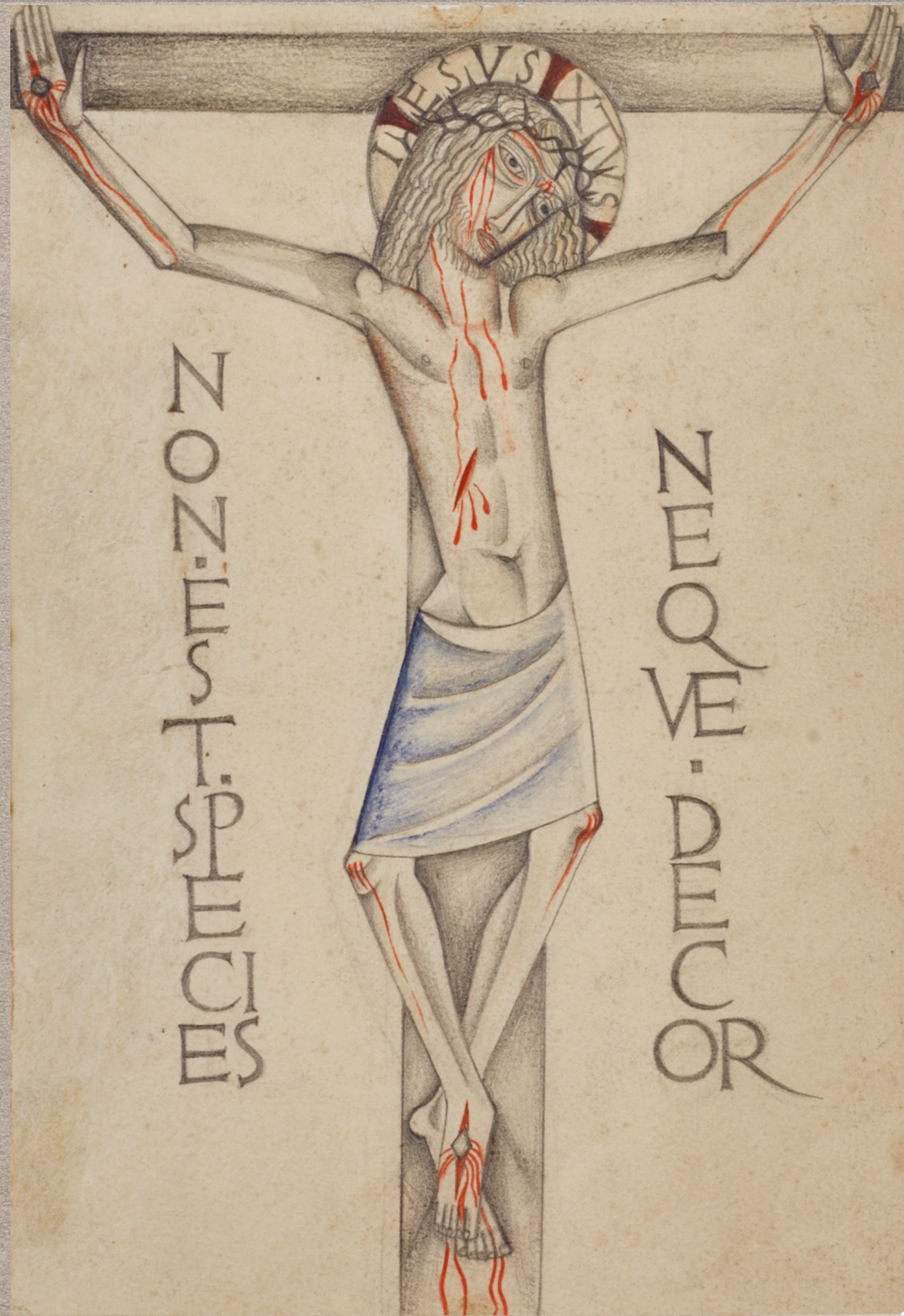
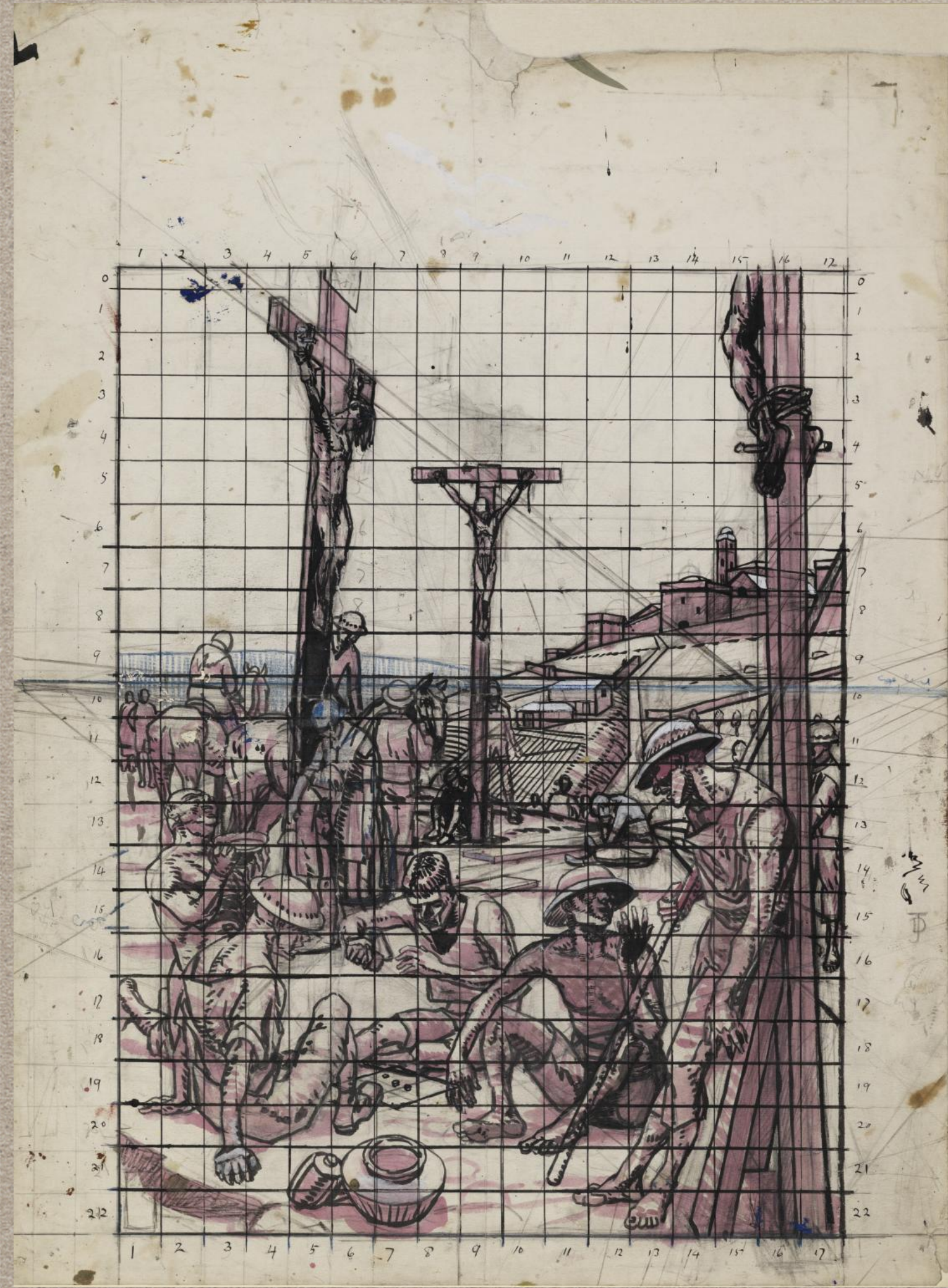
a. daeth. r. Gair. m. Gnaud
 MVL* I* E* R
 C* A* N* T* A* T:
 EGO. QVASI
 TRAMES. AQVÆ
 IMMENSÆ
 DE FLVVIO. EGO. QVASI
 FLVVI. DIORYX. ET. SICVT
 AQVÆ DVCTVS
 EXIVI. DE PARADISO
 DUVU. OED. r. Gair. m. Gnaud
 to. row. is. cumin. full. humbr.

Mulier Cantat, 1960 Watercolour on underpainting of Chinese white
 Amgueddfa Cymru - National Museum of Wales



NOZ. IHS. H. S. MD. C. D. S.

COR. ME. D. M. C. O. R.





Flora in Calix-Light, 1950 Pencil and watercolour, Kettle's Yard University of Cambridge